

VHL

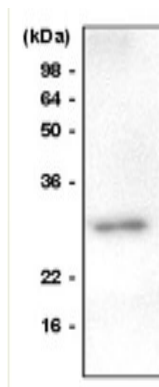
Mouse Anti-Human VHL Clone 52A11 mAb

Catalog No.	CSI15567A CSI15567B	Quantity:	50 µl 100 µl
Alternate Names:	HRCA1, RCA1, VHL1, elongin binding protein		
Description:	<p>Von Hippel-Lindau disease (VHL) is a dominant inherited syndrome characterized by the predisposition to develop various kinds of benign and malignant tumors, including clear cell renal carcinomas, pheochromocytomas and hemangioblastomas of the central nervous system and retina. VHL syndrome is caused by germline mutation in the VHL tumor suppressor, and VHL tumors are associated with loss or mutation of the remaining wild-type allele. VHL has two domains: a roughly 100-residue NH2-terminal domain rich in beta sheet (beta-domain) and a smaller alpha-helical domain (alpha-domain), held together by two linkers and a polar interface. VHL protein is also involved in the degradation of hypoxia-inducible factor (HIF).</p>		
Concentration:	1 mg/ml		
Gene ID:	7428		
Protein Accession No.:	NP_000542		
Host:	Mouse		
Immunogen:	Recombinant human VHL (aa 1-154) purified from <i>E. coli</i>		
Isotype:	Mouse IgG _{2b} heavy chain and κ light chain		
Clone:	<p>Anti-human VHL mAb, clone 52A11, is derived from hybridization of mouse SP2/O myeloma cells with spleen cells from BALB/c mice immunized with a recombinant human VHL protein.</p>		
Formulation:	<p>Liquid. Supplied in Phosphate-Buffered Saline (pH 7.4) with 0.1% Sodium azide. Precaution: Sodium azide is a poisonous and hazardous substance which should be handled by trained staff only.</p>		
Purification:	By protein-G affinity chromatography		
Cross-Reactivity:	Human		
Applications:	ELISA, WB (Cell lysate)		
Application Notes:	<p>The antibody has been tested by ELISA and Western blot analysis to assure specificity and reactivity. Since application varies, however, each investigation should be titrated by the reagent to obtain optimal results. Recommended dilution range for Western blot analysis is 1:500 ~ 1,000. Recommended starting dilution is 1:500.</p>		



Storage & Stability: Can be stored at +4°C. For long term storage, aliquot and store at -20°C. **Avoid repeated freezing and thawing cycles.**

Western Blot Analysis: HepG2 cell lysate was resolved by SDS-PAGE, transferred to PVDF membrane and probed with anti-human VHL antibody (1:500). Protein was visualized using a goat anti-mouse secondary antibody conjugated to HRP and an ECL detection system.



NOT FOR HUMAN USE. FOR RESEARCH ONLY. NOT FOR DIAGNOSTIC OR THERAPEUTIC USE.



Cell Sciences®
480 Neponset Street
Bldg 12A
Canton, MA 02021

Toll Free: 888-769-1246
Phone: 781-828-0610
Fax: 781-828-0542

E-mail: info@cellsciences.com
Website: www.cellsciences.com