

CRYAB

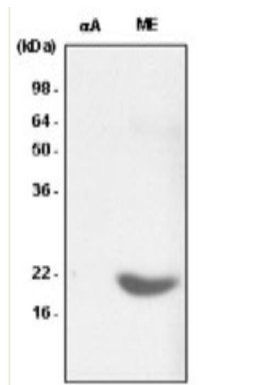
Mouse Anti-Human Crystallin Alpha B Clone 2E8 mAb

Catalog No.	CSI15568A CSI15568B	Quantity:	50 µl 100 µl
Alternate Names:	CRYA2, CTPP2, HSPB5, alpha crystallin B chain, heat-shock 20 kD like-protein		
Description:	Alpha-Crystallins are composed of two gene products; alpha-Crystallin A and B, for acidic and basic, respectively. alpha-Crystallins can be induced by heat shock and are members of the small heat shock protein (sHSP also known as the HSP20). They act as molecular chaperones and hold them in large soluble aggregates. These heterogeneous aggregates consist of 30-40 subunits; the alpha-Crystallin A and B subunits have a 3:1 ratio, respectively. Two additional functions of alpha-crystallins are an autokinase activity and participation in the intracellular architecture. alpha-Crystallin B is expressed widely in many tissues and organs and occurs in many neurological diseases.		
Concentration:	1 mg/ml		
Gene ID:	1410		
Protein Accession No.:	P_001876.1		
Host:	Mouse		
Immunogen:	Recombinant human Crystallin alpha B (1-175 aa) purified from <i>E. coli</i>		
Isotype:	Mouse IgG _{2b} heavy chain and κ light chain		
Clone:	Clone 2E8 is derived from hybridization of mouse SP2/O myeloma cells with spleen cells from BALB/c mice immunized with recombinant Crystallin alpha B.		
Formulation:	Liquid. Supplied in Phosphate-Buffered Saline (pH 7.4) with 0.1% Sodium Azide Precaution: Sodium azide is a poisonous and hazardous substance which should be handled by trained staff only.		
Purification:	By protein-G affinity chromatography		
Cross-Reactivity:	Human, Mouse		
Applications:	ELISA, WB (Cell lysate)		
Application Notes:	The antibody has been tested by ELISA and Western blot analysis to assure specificity and reactivity. Since application varies, however, each investigation should be titrated by the reagent to obtain optimal results. Recommended dilution range for Western blot analysis is 1:500 ~ 2,000. Recommended starting dilution is 1:1,000. Please note that this antibody (2E8) has the specificity against crystallin alpha B, do not detect crystallin alpha A.		



Storage & Stability: Can be stored at +4C. For long term storage, aliquot and store at -20C. **Avoid repeated freezing and thawing cycles.**

Western Blot Analysis: Recombinant crystallin alpha A (alphaA) and the extract of mouse eye (ME) were resolved by SDS-PAGE, transferred to PVDF membrane and probed with anti-human crystallin alpha B antibody (1:1,000). Proteins were visualized using a goat anti-mouse secondary antibody conjugated to HRP and an ECL detection system.



NOT FOR HUMAN USE. FOR RESEARCH ONLY. NOT FOR DIAGNOSTIC OR THERAPEUTIC USE.



Cell Sciences®
480 Neponset Street
Bldg 12A
Canton, MA 02021

Toll Free: 888-769-1246
Phone: 781-828-0610
Fax: 781-828-0542

E-mail: info@cellsciences.com
Website: www.cellsciences.com