

KIR2DL1

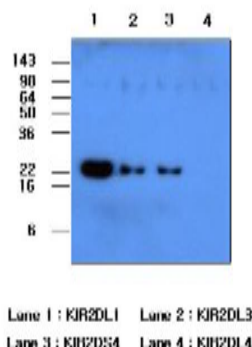
Mouse Anti-Human Killer Cell Immunoglobulin-Like Receptor, 2 Domains Long Cytoplasmic Tail 1 Clone 2F9 mAb

Catalog No.	CSI15571A CSI15571B	Quantity:	50 µl 100 µl
Alternate Names:	CD158A, KIR-K64, KIR221, NKAT, NKAT1, p58.1, killer inhibitory receptor 2-2-1, natural killer-associated transcript 1, p58 NK cell inhibitory receptor NKR-K6, p58 killer cell inhibitory receptor KIR-K64, p58 natural killer cell receptor		
Description:	The kIR family consists of transmembrane glycoproteins of the Ig superfamily expressed on human Nk cells and a subset of human T cells which they are involved in recognition of either MHC class I molecules or unknown ligand on target cells and inhibit cytotoxic activities.		
Concentration:	1 mg/ml		
Gene ID:	3802		
Protein Accession No.:	NP_055033		
Host:	Mouse		
Immunogen:	Recombinant human kIR2DL1 (aa 23-223) purified from <i>E. coli</i>		
Isotype:	Mouse IgG _{2a} heavy chain and κ light chain		
Clone:	Anti-human kIR2DL1 mAb, clone 2F9, is derived from hybridization of mouse SP2/0 myeloma cells with spleen cells from BALB/c mice immunized with a recombinant human kIR2DL1 protein.		
Formulation:	Liquid. Supplied in Phosphate-Buffered Saline (pH 7.4) with 0.1% Sodium Azide. Precaution: Sodium azide is a poisonous and hazardous substance which should be handled by trained staff only.		
Purification:	By protein-G affinity chromatography		
Cross-Reactivity:	Human		
Applications:	ELISA, WB (Recombinant protein), Immunoprecipitation		
Application Notes:	The antibody has been tested by ELISA, Western blot and immunoprecipitation analysis to assure specificity and reactivity. Since application varies, however, each investigation should be titrated by the reagent to obtain optimal results. Recommended dilution range for Western blot analysis is 1:500 ~ 2,000. Recommended starting dilution is 1:500.		



Storage & Stability: Can be stored at +4°C. For long term storage, aliquot and store at -20°C. **Avoid repeated freezing and thawing cycles.**

Western Blot Analysis: Recombinant human protein KIR2DL1, KIR2DL3, KIR2DS4 and KIR2DL4 (each 50 ng per well) were resolved by SDS-PAGE, transferred to PVDF membrane and probed with anti-human KIR2DL1 (1:500). Proteins were visualized using a goat anti-mouse secondary antibody conjugated to HRP and an ECL detection system.



NOT FOR HUMAN USE. FOR RESEARCH ONLY. NOT FOR DIAGNOSTIC OR THERAPEUTIC USE.



Cell Sciences®
480 Neponset Street
Bldg 12A
Canton, MA 02021

Toll Free: 888-769-1246
Phone: 781-828-0610
Fax: 781-828-0542

E-mail: info@cellsciences.com
Website: www.cellsciences.com