

CASP2

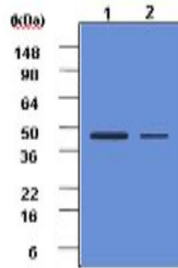
Mouse Anti-Human Caspase 2 Clone 1C10 mAb

Catalog No.	CSI15577A CSI15577B	Quantity:	50 µl 100 µl
Alternate Names:	CASP-2, ICH-1L, ICH-1L/1S, ICH1, NEDD2, ICH-1 protease, NEDD2 apoptosis regulatory, caspase 2, neural precursor cell expressed, developmentally down-regulated 2		
Description:	The caspase family of cystein proteases functions as fundamental effectors in apoptosis. These enzymes participate in a cascade that is triggered in response to proapoptotic signals and culminates in cleavage of a set of proteins, resulting in disassembly of the cell. Caspase-2, initially described as NEDD2/ICH1, was identified as a protein related to the <i>Caenorhabditis elegans</i> cell death protein CED-3 and mammalian interleukin-1β-converting enzyme which is highly expressed in embryonic brain and down-regulated in adult brain.		
Concentration:	1 mg/ml		
Gene ID:	835		
Protein Accession No.:	NP_116764		
Host:	Mouse		
Immunogen:	Recombinant human Caspase-2 (32-169 aa) purified from <i>E. coli</i>		
Isotype:	Mouse IgG _{2b} heavy chain and κ light chain		
Clone:	Anti-human Caspase-2 mAb, clone 1C10, is derived from hybridization of mouse SP2/O myeloma cells with spleen cells from BALB/c mice immunized with a recombinant human caspase-2 protein.		
Conjugate:	unconjugated		
Formulation:	Liquid. Supplied in Phosphate-Buffered Saline (pH 7.4) with 0.1% Sodium Azide. Precaution: Sodium azide is a poisonous and hazardous substance which should be handled by trained staff only.		
Purification:	By protein-G affinity chromatography		
Cross-Reactivity:	Human		
Applications:	ELISA, WB (Cell lysate)		
Application Notes:	The antibody has been tested by ELISA and Western blot analysis to assure specificity and reactivity. Since application varies, however, each investigation should be titrated by the reagent to obtain optimal results. Recommended dilution range for Western blot analysis is 1:500 ~ 1,000. Recommended starting dilution is 1:500.		



Storage & Stability: Can be stored at +4°C. For long term storage, aliquot and store at -20°C. **Avoid repeated freezing and thawing cycles.**

Cell lysates of Ramos and Jurkat (each 40ug) were resolved by SDS-PAGE, transferred to PVDF membrane and probed with anti-human Caspase-2(1:500). Proteins were visualized using a goat anti-mouse secondary antibody conjugated to HRP and an ECL detection system.



Lane 1 : Ramos Lane 2 : Jurkat

NOT FOR HUMAN USE. FOR RESEARCH ONLY. NOT FOR DIAGNOSTIC OR THERAPEUTIC USE.

