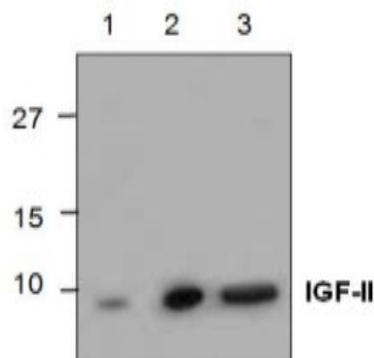


IGF2

Rabbit Anti-Human Insulin-like Growth Factor 2 pAb

Catalog No.	PA0382	Quantity:	100 µg
Alternate Names:	Somatomedin A, IGF-II, IGF-2		
Description:	Rabbit Anti-Human Insulin-like Growth Factor 2 Polyclonal Antibody IGF-II (Insulin-like Growth Factor-II) is a polypeptide growth factor that stimulates the proliferation of a wide range of cell types. Human IGF-II is a 7.5 kDa protein containing 67 amino acid residues.		
Gene ID:	3481		
Concentration:	0.5 mg/mL		
Specificity:	Human IGF-II		
Host:	Rabbit		
Immunogen:	<i>E. coli</i> expressed recombinant Human IGF-II		
Formulation:	Liquid in PBS, pH 7.2, + 30% Glycerol + 0.5% BSA + 0.01% Thimerosal. Precaution: Thimerosal is a poisonous and hazardous substance which should be handled by trained staff only.		
Purification:	Affinity chromatography		
Applications:	Western blot: use a working dilution of 0.5-4 µg/ml. The optimal concentration should be determined by the user for each specific application.		
Storage & Stability:	Store at -20°C. For longer term, store in working aliquots at -80°C. Avoid repeated freeze-thaw cycles.		

Western blot analysis of recombinant IGF-II (MW = 7.5 kDa) at 50, 250, or 500 ng per lane detected with Rabbit Anti-Human IGF-II Polyclonal Antibody.



NOT FOR HUMAN USE. FOR RESEARCH ONLY. NOT FOR DIAGNOSTIC OR THERAPEUTIC USE.



Cell Sciences®
480 Neponset Street
Bldg 12A
Canton, MA 02021

Toll Free: 888-769-1246
Phone: 781-828-0610
Fax: 781-828-0542

E-mail: info@cellsciences.com
Website: www.cellsciences.com