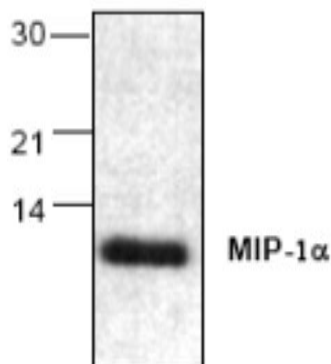


## Rabbit Anti-Multispecies MIP1A/CCL3 Affinity Purified pAb

<b>Catalog No.</b>	PA0972	<b>Quantity:</b>	100 µg
<b>Alternate Names:</b>	Macrophage Inflammatory Protein 1-alpha, LD78-alpha, MIP-1-alpha, SCI, SCYA3, SIS-beta, TY5		
<b>Description:</b>	Rabbit Anti-Multispecies MIP1A/CCL3 Affinity Purified polyclonal antibody		
<b>Concentration:</b>	0.5 mg/ml		
<b>Specificity:</b>	Mouse and rat MIP1A		
<b>Host:</b>	Rabbit		
<b>Immunogen:</b>	Recombinant rat MIP1A (aa 1-69)		
<b>Formulation:</b>	Liquid in PBS, pH 7.2 + 50% glycerol + 1% BSA + 0.02% thimerosal. Precaution: Thimerosal is a poisonous and hazardous substance which should be handled by trained staff only.		
<b>Purification:</b>	Biospecific affinity chromatography		
<b>Applications:</b>	Western Blot Immunoprecipitation		
<b>Application Notes:</b>	For Western Blot use a working dilution of 0.5-4 µg/ml. For Immunoprecipitation use a working dilution of 4-8 µg/ml. The optimal concentration should be determined by the user for each specific application.		
<b>Storage &amp; Stability:</b>	Store at -20°C. For long term storage, aliquot and store at -80°C. <b>Avoid repeated freeze-thaw cycles.</b>		

Western Blot analysis of MIP1A with RAW264.7 cells treated with LPS.



NOT FOR HUMAN USE. FOR RESEARCH ONLY. NOT FOR DIAGNOSTIC OR THERAPEUTIC USE.



**Cell Sciences®**  
480 Neponset Street  
Bldg 12A  
Canton, MA 02021

Toll Free: 888-769-1246  
Phone: 781-828-0610  
Fax: 781-828-0542

E-mail: [info@cellsciences.com](mailto:info@cellsciences.com)  
Website: [www.cellsciences.com](http://www.cellsciences.com)