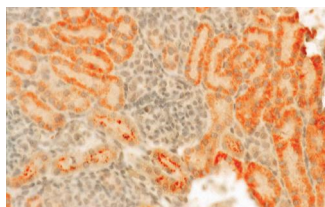


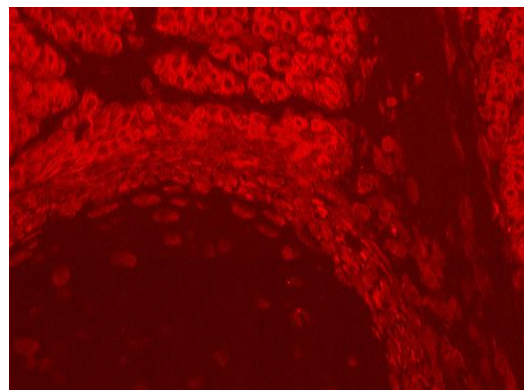
Rabbit Anti-Multispecies IGF2 Affinity Purified pAb

Catalog No.	PAAL1	Quantity:	50 µg
Alternate Names:	Insulin-like Growth Factor-2, INSIGF, MSA, somatomedin A		
Description:	Rabbit Anti-Multispecies Insulin-like Growth Factor-2 polyclonal antibody.		
Specificity:	Rat IGF2		
Host:	Rabbit		
Immunogen:	Recombinant human IGF2-ovalbumin conjugate		
Formulation:	Lyophilized from PBS		
Purification:	IGF2 affinity column		
Reconstitution:	Centrifuge vial prior to opening. Reconstitute in 500 µl sterile water (a 1:10 dilution).		
Cross-Reactivity:	Recognizes rat, human, mouse, and chicken IGF2; reacts 20% with human IGF1 but shows no cross-reactivity with rat IGF1.		
Applications:	Western Blot Immunohistochemistry in rat tissues		
Application Notes:	For Western Blot use a working dilution of 1:1,000. For Immunohistochemistry in rat tissues use a working dilution of 1:100. The optimal concentration should be determined by the user for each specific application.		
Storage & Stability:	Lyophilized antibody is stable for 2 years at 2-4°C. Store reconstituted antibody in working aliquots at -20°C. Avoid repeated freeze-thaw cycles.		

IGF2 in embryonic rat kidney



IGF2 in embryonic rat rib



NOT FOR HUMAN USE. FOR RESEARCH ONLY. NOT FOR DIAGNOSTIC OR THERAPEUTIC USE.



Cell Sciences®
480 Neponset Street
Bldg 12A
Canton, MA 02021

Toll Free: 888-769-1246
Phone: 781-828-0610
Fax: 781-828-0542

E-mail: info@cellsciences.com
Website: www.cellsciences.com