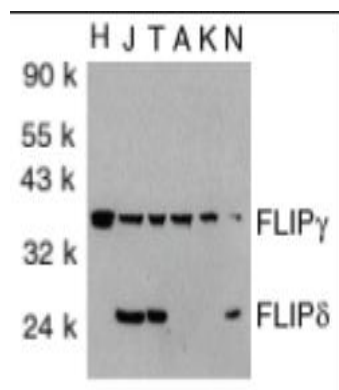


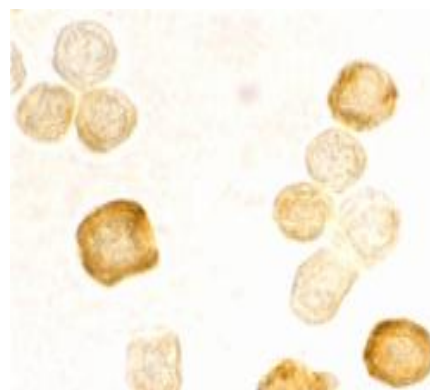
## FLIP gamma/delta, Affinity Purified, Human pAb

<b>Catalog No.</b>	PX112A PX112B	<b>Quantity:</b>	100 µg 0.5 mg
<b>Name:</b>	FLIP gamma/delta		
<b>Concentration:</b>	0.5 mg/ml		
<b>Alternate Names:</b>	FLAME-1, CASH, CLARP, I-FLICE		
<b>Specificity:</b>	Human FLIP $\gamma$ and FLIP $\delta$		
<b>Host:</b>	Rabbit		
<b>Immunogen:</b>	A peptide corresponding to amino acids 191 to 209 at C-terminus of human FLIP $\delta$ /FLIPs form		
<b>Isotype:</b>	IgG		
<b>Formulation:</b>	Liquid in PBS containing 0.02% sodium azide. Precaution: Sodium azide is a poisonous and hazardous substance which should be handled by trained staff only.		
<b>Purification:</b>	Affinity purified		
<b>Cross-Reactivity:</b>	This antibody recognizes human and mouse FLIP $\gamma$ and FLIP $\delta$ but not FLIP $\alpha$ or FLIP $\beta$ .		
<b>Storage &amp; Stability:</b>	<b>Centrifuge vial prior to opening.</b> Store at 2-4°C for up to one year.		
<b>Applications:</b>	Western blot for detection of FLIP: working dilution of 1:1,000 Jurkat cell lysate can be used as a positive control. Bands can be detected at 35 kDa and 25 kDa. The optimal concentration should be determined by the user for each specific application.		

Western blot analysis of FLIP $\gamma$ / $\delta$  in total cell lysates from HeLa (H), Jurkat (J), THP-1 (T), A431 (A), K562 (K) and NIH3T3 (N) cells with FLIP $\gamma$ / $\delta$  antibody at 1:1,000 dilution.



Immunocytochemistry staining of HeLa cells using FLIP $\gamma$ / $\delta$  antibody at 2 µg/ml.



NOT FOR HUMAN USE. FOR RESEARCH ONLY. NOT FOR DIAGNOSTIC OR THERAPEUTIC USE.



**Cell Sciences®**  
480 Neponset Street  
Bldg 12A  
Canton, MA 02021

Toll Free: 888-769-1246  
Phone: 781-828-0610  
Fax: 781-828-0542

E-mail: [info@cellsciences.com](mailto:info@cellsciences.com)  
Website: [www.cellsciences.com](http://www.cellsciences.com)