

CXCR4

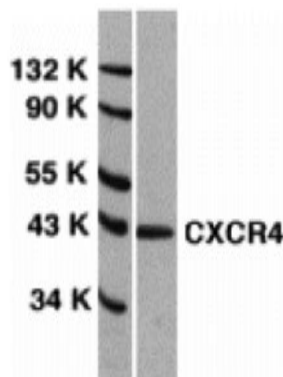
Rabbit Anti-Human CXCR4 Extracellular Loop aa182-196 pAb

Catalog No.	PX170A PX170B	Quantity:	100 µg 0.5 mg
Alternate Names:	Fractalkine Receptor, CX3CR1, CCRL1, CMKBLR1, CMKDR1, GPR13, GPRV28, RBS11, V28		
Description:	Human Immunodeficiency Virus (HIV) and related viruses require co-receptors, in addition to CD4, to infect target cells. Some G protein-coupled receptors including CCR5, CXCR4, CCR3, CCR2b and CCR8 in the chemokine receptor family, and four new human molecules GPR15, STRL33, GPR1 and V28 were recently identified as HIV co-receptors. Among them, CXCR4 (fusin, LESTR or HUMSTR) is a principal coreceptor for T-cell tropic strains of HIV-1 fusion and entry of human white blood cells. CXCR4 is also required for infection by dual-tropic strains of HIV-1 and mediates CD-4 independent infection by HIV-2. The chemokine Stromal cell-Derived Factor (SDF) is the ligand for CXCR4 and prevents infection by T-tropic HIV-1. CXCR4 associates with the surface CD4-gp120 complex before HIV enters target cells. CXCR4 messenger RNA levels correlated with HIV-1 permissiveness in diverse human cell types. Antibodies to CXCR4 block HIV-1 and HIV-2 fusion and infection of human target cells. The N-terminal domain and the second extracellular loop of CXCR4 serve as HIV binding sites.		
Specificity:	Second Extracellular Loop (EL) of Human CXCR4 (aa 182-196)		
Host:	Rabbit		
Immunogen:	A 15 amino acid peptide near the center of Human CXCR4.		
Isotype:	IgG		
Formulation:	Liquid in PBS + 0.02% Sodium Azide. Precaution: Sodium Azide is a poisonous and hazardous substance which should be handled by trained staff only.		
Purification:	DEAE purified		
Cross-Reactivity:	Cross reacts with Mouse		
Applications:	Western Blot Immunofluorescence ELISA		
Application Notes:	WB: use at 0.5 - 1 µg/ml. IF: start at 4 µg/ml. HeLa whole cell lysate can be used as positive control. The optimal concentration should be determined by the user for each specific application.		



Storage & Stability: Stable at 4°C for 3 months or at -20°C for 1 year. **Avoid repeated freeze-thaw cycles.**

Western blot analysis of CXCR4 in HeLa
total cell lysate with anti-CXCR4 (EL) at
1:1000 dilution.



NOT FOR HUMAN USE. FOR RESEARCH ONLY. NOT FOR DIAGNOSTIC OR THERAPEUTIC USE.



Cell Sciences®
480 Neponset Street
Bldg 12A
Canton, MA 02021

Toll Free: 888-769-1246
Phone: 781-828-0610
Fax: 781-828-0542

E-mail: info@cellsciences.com
Website: www.cellsciences.com