

## Gpr15

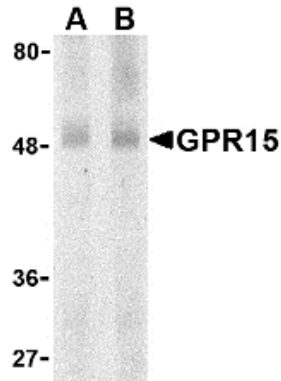
### Rabbit Anti-Rat G-protein coupled receptor 15 (NT) Affinity Purified pAb

<b>Catalog No.</b>	PX177A PX177B	<b>Quantity:</b>	100 µg 0.5 mg
<b>Alternate Names:</b>	GPR15 Antibody: BOB		
<b>Description:</b>	GPR15 Antibody: Human immunodeficiency virus (HIV) and related viruses require coreceptors to infect target cells. Some G protein-coupled receptors including CCR5, CXCR4, CCR3, CCR2b and CCR8 in the chemokine receptor family, and four new human molecules GPR15, STRL33, GPR1 and V28 were recently identified as HIV coreceptors. The genes encoding human and monkey GPR15/BOB (for G protein-coupled receptor 15 and brother of Bonzo, respectively, ) were recently cloned. This novel G protein-coupled receptor serves as coreceptor for simian immunodeficiency virus (SIV), and for strains of HIV-2 and M-tropic HIV-1. The ligand for GPR15 has not been identified yet.		
<b>Concentration:</b>	1 mg/mL		
<b>Gene ID:</b>	288181		
<b>Molecular Weight:</b>	Approximately 50 kDa		
<b>Host:</b>	Rabbit		
<b>Immunogen:</b>	GPR15 antibody was raised against a peptide corresponding to amino acids near the amino terminus of human GPR15. The sequence differs from those of African green monkey and pig-tailed macaque BOB by one amino acid.		
<b>Isotype:</b>	IgG		
<b>Clone:</b>	This is a polyclonal GPR15 Antibody.		
<b>Conjugate:</b>	None		
<b>Formulation:</b>	Liquid. GPR15 Antibody is supplied in PBS containing 0.02% sodium azide. <b>Precaution: Sodium azide is a poisonous and hazardous substance which should be handled by trained staff only.</b>		
<b>Purification:</b>	GPR15 Antibody is affinity chromatography purified via peptide column.		
<b>Cross-Reactivity:</b>	H, M, R		
<b>Applications:</b>	E, WB		
<b>Application Notes:</b>	GPR15 antibody can be used for detection of GPR15/BOB by Western blot at 0.5 - 1 µg/mL. An approximately 50 kDa band can be detected.		
<b>Storage &amp; Stability:</b>			



GPR15 antibody can be stored at 4°C for three months and -20°C, stable for up to one year. As with all antibodies care should be taken to **avoid repeated freeze thaw cycles**. Antibodies should not be exposed to prolonged high temperatures.

Western blot analysis of GPR15 in human spleen lysate with GPR15 antibody at (A) 0.5 and (B) 1 µg/mL.



NOT FOR HUMAN USE. FOR RESEARCH ONLY. NOT FOR DIAGNOSTIC OR THERAPEUTIC USE.



**Cell Sciences®**  
480 Neponset Street  
Bldg 12A  
Canton, MA 02021

Toll Free: 888-769-1246  
Phone: 781-828-0610  
Fax: 781-828-0542

E-mail: [info@cellsciences.com](mailto:info@cellsciences.com)  
Website: [www.cellsciences.com](http://www.cellsciences.com)