

Anti-IL-21R (ED)

CATALOG No.: PX205A
PX205B

SIZE: 100 µg
0.5 mg

BACKGROUND:

A novel cytokine related to IL-2 and IL-15 was recently identified and designated IL-21 (1). The receptor for IL-21 (IL-21R, also termed NILR for novel Interleukin receptor) is a new member of the class I cytokine receptor family (1,2). IL-21R forms a complex with the common cytokine receptor γ chain, γ_c , and mediates IL-21 signaling (3,4). Both IL-21R and the γ_c are necessary for the IL-21 function. IL-21 and its receptor activate JAK-STAT signaling pathway. IL-21R is expressed in spleen, thymus, natural killer (NK), T and B cell lines. IL-21 plays a role in the proliferation and maturation of NK, B and T cell populations.

SOURCE:

Rabbit anti-IL-21R polyclonal antibody was raised against a synthetic peptide (NITDQSGNYSQECGS) corresponding to amino acids 97 to 111 of human IL-21R precursor (1).

APPLICATION:

This antibody can be used for detection of IL-21R by Western blot at 0.5 to 1 µg/ml. Human Raji and A431 cell lysates can be used as positive control and an approximately 60 kDa band can be detected.

For research use only.

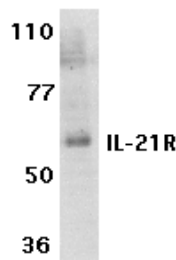
STORAGE:

It is supplied as immunoaffinity purified IgG, 100 µg in 200 µl of PBS containing 0.02% sodium azide. Store at 4°C, stable for one year.

RELATED PRODUCTS:

Blocking peptide, 50 µg at 200 µg/ml, is available for competition studies.

Human Raji cell lysate, 200 µg at 2 mg/ml, is available for positive control.



Western blot analysis of IL-21R expression in human Raji cell lysate with anti-IL-21R (ED) at 1 µg/ml.

REFERENCES:

1. arrish-Novak J, Dillon SR, Nelson A, et al. Interleukin 21 and its receptor are involved in NK cell expansion and regulation of lymphocyte function. *Nature*. 2000;408(6808):57-63.
2. Ozaki K, Kikly K, Michalovich D, et al. Cloning of a type I cytokine receptor most related to the IL-2 receptor beta chain. *Proc Natl Acad Sci USA*. 2000;97(21):11439-44.
3. Asao H, Okuyama C, Kumaki S, et al. the common gamma-chain is an indispensable subunit of the IL-21 receptor complex. *J Immunol*. 2001;167(1):1-5.
4. Vosschenrich CA, Di Santo JP. Cytokines: IL-21 joins the gamma(c)-dependent network? *Curr Biol*. 2001;11(5):R175-7.

CAUTION: NOT FOR USE IN HUMANS. FOR RESEARCH PURPOSES ONLY.



Cell Sciences, Inc.
1504 Providence Highway
Unit 11B
Norwood, MA 02062

Toll Free: 888 769-1246
Phone: 781 769-0610
Fax: 781 769-0542

E-mail: info@cellsciences.com
Web Site: www.cellsciences.com