

## BBC3

### Rabbit Anti-Human PUMA (CT) Affinity Purified pAb

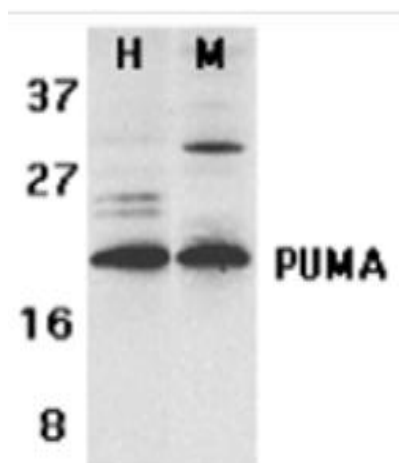
<b>Catalog No.</b>	PX240A PX240B	<b>Quantity:</b>	100 µg 0.5 mg
<b>Alternate Names:</b>	JFY1, PUMA, Bcl-2 binding component 3		
<b>Description:</b>	This gene encodes a member of the BCL-2 family of proteins. This family member belongs to the BH3-only pro-apoptotic subclass. The protein cooperates with direct activator proteins to induce mitochondrial outer membrane permeabilization and apoptosis. It can bind to anti-apoptotic Bcl-2 family members to induce mitochondrial dysfunction and caspase activation. Because of its pro-apoptotic role, this gene is a potential drug target for cancer therapy and for tissue injury. Alternative splicing results in multiple transcript variants.		
<b>Source:</b>	PUMA antibody was raised against a synthetic peptide corresponding to 14 amino acids near the carboxy terminus of human PUMA-a (GenBank Accession number Q9BXH1) This sequence is identical between a and b forms of the PUMA proteins		
<b>Gene ID:</b>	27113		
<b>Buffer:</b>	Antibody is supplied in PBS containing 0.02% sodium azide. <b>Precaution:</b> Sodium azide is a poisonous and hazardous substance which should be handled by trained staff only.		
<b>Host:</b>	Rabbit anti-PUMA polyclonal antibody was raised against a synthetic peptide (PLPRGHRAPEMEPN) corresponding to amino acids 180 to 193 of human PUMA-α. This sequence is identical between α and β forms of the PUMA proteins.		
<b>Immunogen:</b>	Human PUMA (C-Terminus) Peptide		
<b>Protein Accession #:</b>	NP_055232		
<b>Purification:</b>	Affinity chromatography purified via peptide column		
<b>Cross-Reactivity:</b>	Cross-reacts with mouse PUMA (CT) bbc3		
<b>Applications:</b>	PUMA antibody can be used for detection of PUMA by Western blot at 1 to 2 µg/ml. K562 or 3T3 cell lysate can be used as a positive control and a band at approximately 23 kDa can be detected. A lower band at approximately 16 kDa was detected in MOLT4 and U937 cells, which may represent the PUMA-b form. It is human and mouse reactive.		
<b>Tested Applications:</b>	E, WB, ICC		
<b>Storage &amp; Stability:</b>	PUMA antibody can be stored at 4°C, stable for one year. As with all antibodies care should be taken to avoid repeated freeze thaw cycles. Antibodies should not be exposed to prolonged high temperatures.		



**Related Products:** Blocking peptide, 50 µg at 200 µg/ml, is available for competition studies (Catalog No. PX240BP).  
K562 (Catalog No. PX319A) or 3T3 (Catalog No. PX305A) cell lysate, 100 µg at 2 mg/ml, is available for positive control.

Western blot analysis of PUMA expression in human (H) K562 and mouse (M) 3T3 cell lysates with PUMA antibody at 2 µg/ml

Immunocytochemistry of PUMA in K562 cells with PUMA antibody at 1 µg/ml



NOT FOR HUMAN USE. FOR RESEARCH ONLY. NOT FOR DIAGNOSTIC OR THERAPEUTIC USE.



**Cell Sciences®**  
480 Neponset Street  
Bldg 12A  
Canton, MA 02021

Toll Free: 888-769-1246  
Phone: 781-828-0610  
Fax: 781-828-0542

E-mail: [info@cellsciences.com](mailto:info@cellsciences.com)  
Website: [www.cellsciences.com](http://www.cellsciences.com)