

BBC3

Rabbit Anti-Human PUMA Affinity Purified pAb

| | | | |
|--------------------|--------|------------------|--------|
| Catalog No. | PX241A | Quantity: | 100 µg |
| | PX241B | | 0.5 mg |

Alternate Names: JFY1, PUMA, Bcl-2 binding component 3

Description: This gene encodes a member of the BCL-2 family of proteins. This family member belongs to the BH3-only pro-apoptotic subclass. The protein cooperates with direct activator proteins to induce mitochondrial outer membrane permeabilization and apoptosis. It can bind to anti-apoptotic Bcl-2 family members to induce mitochondrial dysfunction and caspase activation. Because of its pro-apoptotic role, this gene is a potential drug target for cancer therapy and for tissue injury. Alternative splicing results in multiple transcript variants

Source: PUMA antibody was raised against a synthetic peptide corresponding to 14 amino acids near the carboxy terminus of human PUMA-a. This sequence is identical between a and b forms of the PUMA proteins

Gene ID: 27113

Buffer: Antibody is supplied in PBS containing 0.02% sodium azide. **Precaution:** Sodium azide is a poisonous and hazardous substance which should be handled by trained staff only.

Host: Rabbit anti-PUMA polyclonal antibody was raised with a synthetic peptide (ARARQEGSSPEPVEG) corresponding to amino acids 2 to 16 of human PUMA-α. This sequence is identical between human and mouse PUMA.

Immunogen: Human PUMA (C-Terminus) Peptide

Purification: Affinity chromatography purified via peptide column

Applications: PUMA antibody can be used for detection of PUMA by Western blot at 2 to 4 µg/ml. K562 cell lysate can be used as a positive control and a band at approximately 23 kDa can be detected. antibody can also detect PUMA by immunohistochemistry at 10 µg/ml.

Tested Applications: E, WB, IHC

Storage & Stability: PUMA antibody can be stored at 4°C, stable for one year. As with all antibodies care should be taken to avoid repeated freeze thaw cycles. Antibodies should not be exposed to prolonged high temperatures.

Related Products: Blocking peptide, 50 µg at 200 µg/ml, is available for competition studies (Catalog No. PX241BP).
K562 cell lysate, 100 µg at 2 mg/ml, is available for positive control (Catalog No. PX319A).



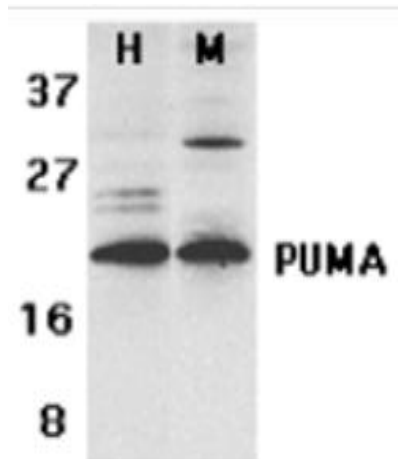
Cell Sciences®
480 Neponset Street
Bldg 12A
Canton, MA 02021

Toll Free: 888-769-1246
Phone: 781-828-0610
Fax: 781-828-0542

E-mail: info@cellsciences.com
Website: www.cellsciences.com

Western blot analysis

Western blot analysis of PUMA expression in human (H) K562 and mouse (M) 3T3 cell lysates with PUMA antibody at 2 µg/ml



Immunocytochemistry of PUMA in K562 cells with PUMA antibody at 1 µg/ml



NOT FOR HUMAN USE. FOR RESEARCH ONLY. NOT FOR DIAGNOSTIC OR THERAPEUTIC USE.



Cell Sciences®
480 Neponset Street
Bldg 12A
Canton, MA 02021

Toll Free: 888-769-1246
Phone: 781-828-0610
Fax: 781-828-0542

E-mail: info@cellsciences.com
Website: www.cellsciences.com