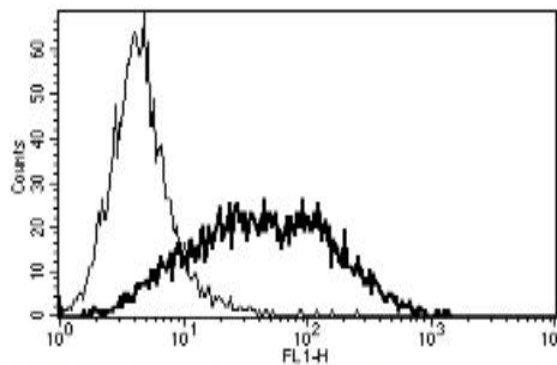


IL2RA

Mouse Anti-Human IL-2R α / CD25 (Clone B-B10) mAb, Azide Free

Catalog No.	CDM001A CDM001B	Quantity:	200 μ g 500 μ g
Alternate Names:	Interleukin-2 receptor subunit alpha, CD25		
Description:	The monoclonal antibody recognizes human CD25, the IL-2 receptor alpha chain. The IL-2 receptor alpha (IL2RA) and beta (IL2RB) chains, together with the common gamma chain (IL2RG), constitute the high-affinity IL-2 receptor. Homodimeric alpha chains (IL2RA) result in low-affinity receptor, while homodimeric beta (IL2RB) chains produce a medium-affinity receptor.		
UniProt ID	P01589		
Gene ID:	3559		
Concentration:	1.0 mg/ml		
Specificity:	Recognizes the human IL-2 Receptor α chain (IL-2 Ra), a 55 kDa protein. Recognizes only membrane bound IL-2 Ra		
Hybridoma:	Myeloma X63/AG.8653 x Balb/c spleen cells		
Isotype:	Mouse IgG1 Kappa light chain		
Immunogen:	PHA activated T-cells		
Clone:	B-B10		
Formulation:	Sterile filtered PBS, treated to remove endotoxin. Carrier and preservative free.		
Purification:	Ion exchange chromatography		
Biological Activity:	Inhibits Mixed Lymphocyte Culture.		
Applications:	Functional studies, ELISA, Flow cytometry		
Storage & Stability:	Store at 2-8°C for up to 12 months after reconstitution. For longer storage, freeze aliquots at -20 to -80°C.. Avoid repeated freeze-thaw cycles.		

A typical staining pattern with the B-B10 mAb of PHA activated lymphocytes



NOT FOR HUMAN USE. FOR RESEARCH ONLY. NOT FOR DIAGNOSTIC OR THERAPEUTIC USE.



Cell Sciences®
65 Parker Street
Unit 11
Newburyport, MA 01950

Toll Free: 888-769-1246
Phone: 978-572-1070
Fax: 978-992-0298

E-mail: info@cellsciences.com
Website: www.cellsciences.com