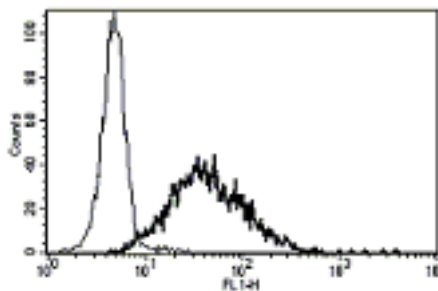


IL2RA

Mouse Anti-Human IL-2 Ra / CD25 (Clone B-G3) Capture mAb, Azide Free

Catalog No.	CDM005A CDM005B CDM005C	Quantity:	200 µg 500 µg 1.0 mg
Alternate Names:	Interleukin-2 receptor subunit alpha, IL-2 RA, p55; TAC antigen		
Description:	The monoclonal antibody recognizes human IL2Ra/CD25. The IL2R alpha and beta (IL2Rb) chains, together with the common gamma chain (IL2Rg), constitute the high-affinity IL2 receptor. Homodimeric alpha chains (IL2Ra) result in low-affinity receptor, while homodimeric beta (IL2Rb) chains produce a medium-affinity receptor.		
UniProt ID:	P01589		
Gene ID:	3559		
Concentration:	1 mg/ml		
Hybridoma:	Myeloma X63/AG.8653 x Balb/c spleen cells		
Specificity:	Human Interleukin 2 Receptor alpha chain (IL-2Rα), a 55 kDa protein. Recognizes both soluble and membrane-bound human IL-2Rα.		
Immunogen:	PHA activated T-cells		
Isotype:	Mouse IgG1 κ light chain		
Clone:	B-G3		
Formulation:	Sterile-filtered PBS, carrier and preservative free.		
Applications:	ELISA, Flow Cytometry		
Application Notes:	ELISA Capture Antibody. This antibody can be used as a Capture Antibody in a human IL-2RA sandwich Immunoassay to detect human IL-2RA in combination with biotinylated human IL-2RA Detection Antibody (Cat No CDM418).		
Storage & Stability:	Store at 2-8°C for up to one year, or store in working aliquots at -20°C to -80°C. Avoid repeated freeze-thaw cycles.		

A typical staining pattern with the B-G3 monoclonal antibody of PHA activated lymphocytes



NOT FOR HUMAN USE. FOR RESEARCH ONLY. NOT FOR DIAGNOSTIC OR THERAPEUTIC USE.



Cell Sciences®
65 Parker Street
Unit 11
Newburyport, MA 01950

Toll Free: 888-769-1246
Phone: 978-572-1070
Fax: 978-992-0298

E-mail: info@cellsciences.com
Website: www.cellsciences.com