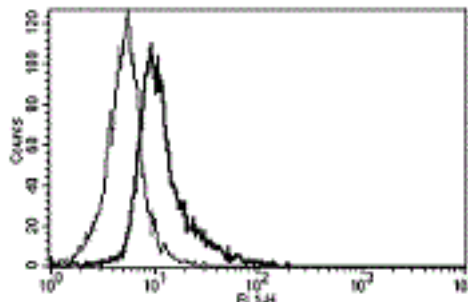


## IL6ST

### Mouse Anti-Human IL-6ST / CD130 (Clone B-R3) mAb, Azide Free

<b>Catalog No.</b>	CDM012A CDM012B	<b>Quantity:</b>	200 µg 500 µg
<b>Alternate Names:</b>	IL-6 Signal Transducer, Interleukin-6 receptor subunit beta, IL-6RB, CD130, CDW130, GP130		
<b>Description:</b>	The monoclonal antibody recognizes human CD130, also known as Interleukin 6 Signal Transducer or gp130. IL-6ST is a signal transducer shared by many cytokines, including interleukin 6 (IL-6), ciliary neurotrophic factor (CNTF), leukemia inhibitory factor (LIF), and oncostatin M (OSM). The protein functions as a part of the cytokine receptor complex and its activation is dependent upon the binding of cytokines to their receptors.		
<b>UniProt ID:</b>	P40189		
<b>Hybridoma:</b>	Myeloma X63/AG.8653 x BALB/c spleen cells		
<b>Concentration:</b>	1.0 mg/ml		
<b>Specificity:</b>	Recognizes gp130, common subunit for IL-6, IL-11, OSM, LIF, CNTF, CT-1 receptors, a 130-140 kDa protein.		
<b>Isotype:</b>	Mouse IgG <sub>2aκ</sub>		
<b>Immunogen:</b>	Native soluble gp130		
<b>Clone:</b>	B-R3		
<b>Formulation:</b>	Sterile-filtered PBS, treated to remove endotoxin. Carrier and preservative free.		
<b>Biological Activity:</b>	Inhibits IL-6, IL-11, CNTF, LIF and OSM activities.		
<b>Applications:</b>	ELISA, Flow Cytometry, Functional Studies		
<b>Storage &amp; Stability:</b>	Store at 2-8 °C for up to one year, for long term, freeze aliquots at -20 °C to -80 °C. <b>Avoid repeated freeze-thaw cycles.</b>		

A typical staining pattern with the B-R3 monoclonal antibody of EA.hy 926 cell line



NOT FOR HUMAN USE. FOR RESEARCH ONLY. NOT FOR DIAGNOSTIC OR THERAPEUTIC USE.