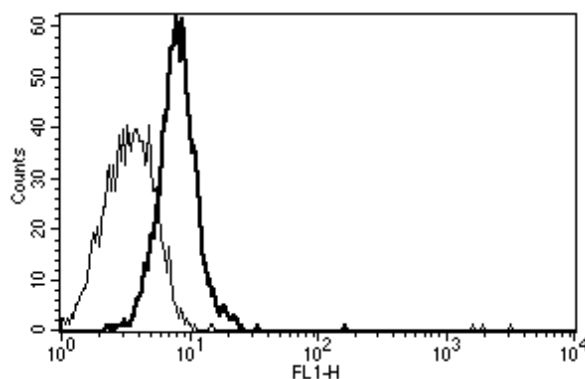


IL6ST

Mouse Anti-Human IL-6R subunit beta / CD130 (Clone B-K5) mAb, Azide Free

Catalog No.	CDM015A CDM015B	Quantity:	200 µg 500 µg
Alternate Names:	Interleukin-6 receptor subunit beta, IL-6 Signal Transducer, CD130, gp130,		
Description:	The monoclonal antibody recognizes human CD130, also known as Interleukin 6 Signal Transducer or gp130. IL-6ST is a signal transducer shared by many cytokines, including interleukin 6 (IL-6), ciliary neurotrophic factor (CNTF), leukemia inhibitory factor (LIF), and oncostatin M (OSM). The protein functions as a part of the cytokine receptor complex and its activation is dependent upon the binding of cytokines to their receptors.		
UniProt ID:	P40189		
Gene ID:	3572		
Concentration:	1.0 mg/ml		
Specificity:	Recognizes gp130, common subunit for IL-6, IL-11, OSM, LIF, CNTF, CT-1 receptors, a 130-140 kDa protein. Recognizes the soluble antigen.		
Hybridoma:	Myeloma X63/AG.8653 x Balb/c spleen cells		
Isotype:	Mouse IgG1 Kappa light chain		
Immunogen:	Native soluble gp130		
Clone:	B-K5		
Formulation:	Sterile filtered PBS, carrier and preservative free.		
Purification:	Ion exchange chromatography		
Biological Activity:	Inhibits CNTF activity, OSM binding to gp130/IL-6ST		
Applications:	Functional Studies, flow cytometry		
Storage & Stability:	Store at 2-8°C for 1 year. Long term, store aliquots at -20°C to -80°C. Avoid repeated freeze-thaw cycles.		

A typical staining pattern with the B-K5 monoclonal antibody of Eahy 926 cell line



Cell Sciences®
65 Parker Street
Unit 11
Newburyport, MA 01950

Toll Free: 888-769-1246
Phone: 978-572-1070
Fax: 978-992-0298

E-mail: info@cellsciences.com
Website: www.cellsciences.com

cellsciences.com

NOT FOR HUMAN USE. FOR RESEARCH ONLY. NOT FOR DIAGNOSTIC OR THERAPEUTIC USE.



Cell Sciences®
65 Parker Street
Unit 11
Newburyport, MA 01950

Toll Free: 888-769-1246
Phone: 978-572-1070
Fax: 978-992-0298

E-mail: info@cellsciences.com
Website: www.cellsciences.com