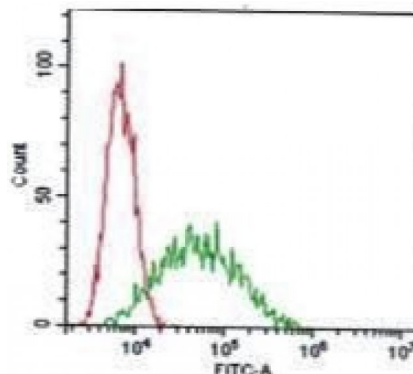


## IL13RA2

### Mouse Anti-Human IL-13R alpha 2 / CD213a2 (Clone B-D13) mAb, Azide Free

<b>Catalog No.</b>	CDM020A CDM020B	<b>Quantity:</b>	200 µg 500 µg
<b>Alternate Names:</b>	Interleukin-13 receptor subunit alpha 2, IL-13RA2, IL-13 binding protein		
<b>Description:</b>	The monoclonal antibody recognizes human IL-13 receptor subunit alpha 2 (IL-13Rα2) which is closely related to IL-13Rα1, a subunit of the IL-13 receptor complex. IL-13Rα2 binds IL-13 with high affinity, but lacks a cytoplasmic domain, and does not appear to function as a signal mediator. It is reported to play a role in the internalization of IL-13.		
<b>UniProt ID:</b>	Q14627		
<b>Gene ID:</b>	3598		
<b>Concentration:</b>	1.0 mg/ml		
<b>Specificity:</b>	Recognizes human IL-13 Rα2, a 44 kDa protein. Recognizes soluble antigen.		
<b>Hybridoma:</b>	Myeloma X63/AG.8653 x Balb/c spleen cells		
<b>Isotype:</b>	Mouse IgG1 Kappa light chain		
<b>Immunogen:</b>	IL-13Rα2 transfected CHO cell line		
<b>Clone:</b>	B-D13		
<b>Formulation:</b>	Sterile-filtered PBS, carrier and preservative free.		
<b>Purification:</b>	Ion exchange chromatography		
<b>Applications:</b>	ELISA, Flow Cytometry, IHC-P, IHC-F, IHC-M		
<b>Storage &amp; Stability:</b>	Store at 2-8°C for up to 1 year or in working aliquots at -20°C to -80°C. <b>Avoid repeated freeze-thaw cycles.</b>		

A typical staining pattern with the B-D13 monoclonal antibody on A375 cell line



NOT FOR HUMAN USE. FOR RESEARCH ONLY. NOT FOR DIAGNOSTIC OR THERAPEUTIC USE.