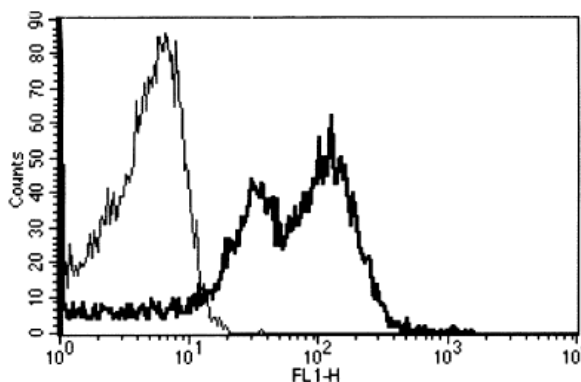


ITGB1

Mouse Anti-Human Integrin Beta-1 / CD29 (Clone B-D15) mAb, Azide Free

Catalog No.	CDM031A CDM031B	Quantity:	200 µg 500 µg
Alternate Names:	Fibronectin receptor subunit beta, Glycoprotein IIa, GPIIa, VLA-4 subunit beta		
Description:	Integrins are heterodimeric proteins made up of alpha and beta subunits. At least 18 alpha and 8 beta subunits have been described in mammals. Integrin family members are membrane receptors involved in cell adhesion and recognition in a variety of processes including embryogenesis, hemostasis, tissue repair, immune response and metastatic diffusion of tumor cells.		
UniProt ID:	P05556		
Concentration:	1.0 mg/ml		
Specificity:	Recognizes Integrin beta-1, a 130 kDa protein		
Hybridoma:	Myeloma X63/AG.8653 x Balb/c spleen cells		
Isotype:	Mouse IgG2a K		
Immunogen:	U937 cell line		
Clone:	B-D15		
Formulation:	Sterile-filtered PBS, carrier and preservative free.		
Application Notes:	Immunohistochemistry: Recommended dilution 1:50. Flow Cytometry The optimal concentration should be determined by the user for each specific application.		
Storage & Stability:	Stable for 1 year at 2-8°C. For longer storage, freeze aliquots at -20°C to -80°C. Avoid repeated freeze-thaw cycles.		

A typical staining pattern with the B-D15 monoclonal antibody of lymphocytes



NOT FOR HUMAN USE. FOR RESEARCH ONLY. NOT FOR DIAGNOSTIC OR THERAPEUTIC USE.