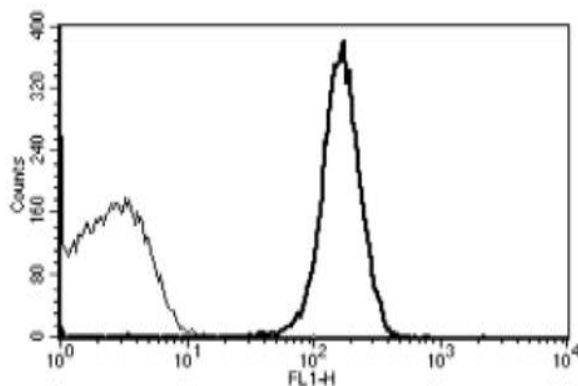


## PECAM1

### Mouse Anti-Human PECAM-1 / CD31 (Clone B-B38) mAb, Azide Free

<b>Catalog No.</b>	CDM035A CDM035B	<b>Quantity:</b>	200 µg 500 µg
<b>Alternate Names:</b>	Platelet Endothelial Cell Adhesion Molecule - 1		
<b>Description:</b>	CD31/PECAM-1 is found on the surface of platelets, monocytes, neutrophils, and some types of T-cells, and makes up a large portion of endothelial cell intercellular junctions. The protein is a member of the immunoglobulin superfamily and is likely involved in leukocyte migration, angiogenesis, and integrin activation.		
<b>UnitProt ID:</b>	P16284		
<b>Gene ID:</b>	5175		
<b>Hybridoma:</b>	Myeloma X63/AG.8653 x BALB/c spleen cells		
<b>Specificity:</b>	Recognises CD31/PECAM-1, a 130-140 kDa protein		
<b>Immunogen:</b>	Recombinant Human CD31/PECAM-1		
<b>Isotype:</b>	Mouse IgG1		
<b>Clone:</b>	B-B38		
<b>Concentration:</b>	1.0 mg/ml		
<b>Formulation:</b>	Sterile-filtered PBS, preservatives and carrier-free.		
<b>Purification:</b>	Ion exchange chromatography		
<b>Applications:</b>	<b>Flow cytometry:</b> Use 10 µl to label 10 <sup>6</sup> cells or 100 µl of whole blood <b>ELISA</b>		
<b>Storage &amp; Stability:</b>	Stable at 2-8°C for one year. For longer storage, freeze in aliquots at -20°C to -80°C. <b>Avoid repeated freeze-thaw cycles.</b>		

A typical staining pattern with the B-B38 monoclonal antibody of platelets



NOT FOR HUMAN USE. FOR RESEARCH ONLY. NOT FOR DIAGNOSTIC OR THERAPEUTIC USE.



**Cell Sciences®**  
65 Parker Street  
Unit 11  
Newburyport, MA 01950

Toll Free: 888-769-1246  
Phone: 978-572-1070  
Fax: 978-992-0298

E-mail: [info@cellsciences.com](mailto:info@cellsciences.com)  
Website: [www.cellsciences.com](http://www.cellsciences.com)