

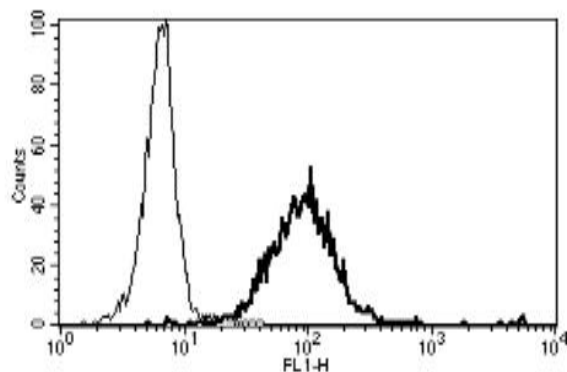
MME

Mouse Anti-Human CD10 (Clone B-E3) mAb, Azide Free

Catalog No.	CDM143A CDM143B	Quantity:	200 µg 500 µg
Alternate Names:	Neprilysin, Atriopeptidase, Common acute lymphocytic leukemia antigen, CALLA, Enkephalinase, Neutral endopeptidase 24.11, NEP, Neutral endopeptidase Skin fibroblast elastase, SFE		
Description:	CD10 is an important cell surface marker in the diagnosis of human acute lymphocytic leukemia (ALL). It is present on leukemic cells of pre-B phenotype, which represent 85% of cases of ALL.		
UniProt ID:	P08473		
Gene ID:	4311		
Concentration:	1.0 mg/ml		
Specificity:	Recognises the Common Acute Lymphoblastic Leukemia Antigen (CALLA), a 100 kDa protein		
Hybridoma:	Myeloma X63/AG.8653 x BALB/c spleen cells		
Immunogen:	Daudi and Raji cell lines		
Isotype:	Mouse IgG2a		
Clone:	B-E3		
Formulation:	Sterile-filtered PBS, treated to remove endotoxin. Carrier and preservative free.		
Purification:	Ion exchange chromatography		
Biological Activity:	Cytotoxic with rabbit complement on CD10+ cells Immunohistochemistry. Does not inhibit the Mixed Lymphocyte Culture.		
Applications:	Flow Cytometry		
Application Notes:	For FC, use 10 µl to label 10 ⁶ cells or 100 µl of whole blood. For IHC, dilute 1:50.		
Storage & Stability:	Stable at 2-8°C for 12 months. For longer storage, freeze aliquots. Avoid repeated freeze-thaw cycles.		



A typical staining pattern with the B-E3 monoclonal antibody of granulocytes



NOT FOR HUMAN USE. FOR RESEARCH ONLY. NOT FOR DIAGNOSTIC OR THERAPEUTIC USE.