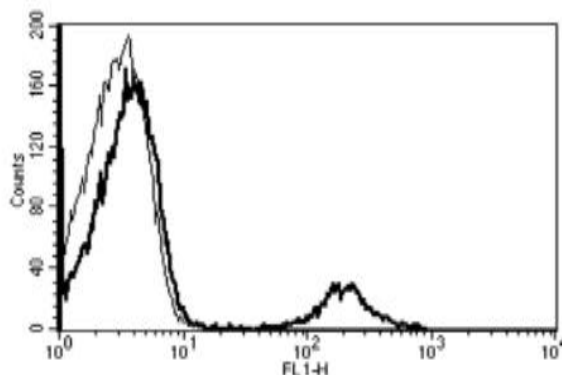


MS4A1

Mouse Anti-Human CD20 (Clone B-H20) mAb, Azide Free

Catalog No.	CDM160A CDM160B	Quantity:	200 µg 500 µg
Alternate Names:	B-lymphocyte antigen CD20, Leukocyte surface antigen Leu-16, Membrane-spanning 4-domains subfamily A member 1, Bp35		
Description:	CD20 is a member of the membrane-spanning 4A family. Members of this protein family display unique expression patterns among hematopoietic cells and nonlymphoid tissues. CD20 is a B-lymphocyte surface molecule which plays a role in the development and differentiation of B-cells into plasma cells.		
UniProt ID:	P11836		
Gene ID:	931		
Concentration:	1.0 mg/ml		
Specificity:	Recognizes the B1/Bp35 antigen, a 33-37 kDa protein.		
Hybridoma:	Myeloma X63/AG.8653 x Balb/c spleen cells		
Isotype:	Mouse IgG2a Kappa light chain		
Immunogen:	Chronic Lymphoid Leukemia (CLL) cells		
Clone:	B-H20		
Formulation:	Sterile filtered PBS, carrier and preservative free.		
Biological Activity:	Cytotoxic in association with the complement on CD20+ cells.		
Applications:	Functional studies, Flow Cytometry		
Storage & Stability:	Stable for 1 year at 2-8°C. For longer storage, freeze aliquots and store at -20 to -80°C. Avoid repeated freeze-thaw cycles.		

A typical staining pattern with the B-H20 monoclonal antibody with lymphocytes



Cell Sciences®
65 Parker Street
Unit 11
Newburyport, MA 01950

Toll Free: 888-769-1246
Phone: 978-572-1070
Fax: 978-992-0298

E-mail: info@cellsciences.com
Website: www.cellsciences.com

cellsciences.com

NOT FOR HUMAN USE. FOR RESEARCH ONLY. NOT FOR DIAGNOSTIC OR THERAPEUTIC USE.



Cell Sciences®
65 Parker Street
Unit 11
Newburyport, MA 01950

Toll Free: 888-769-1246
Phone: 978-572-1070
Fax: 978-992-0298

E-mail: info@cellsciences.com
Website: www.cellsciences.com