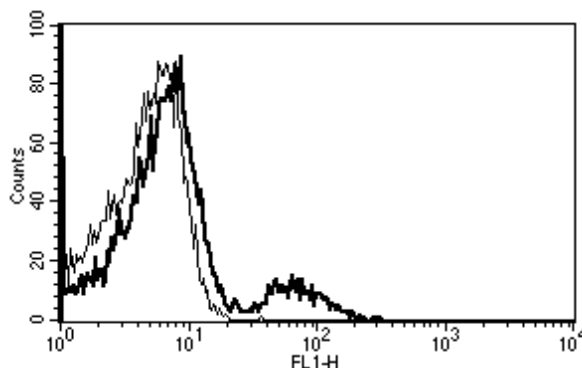


CR2

Mouse Anti-Human CD21 / CR2 (Clone B-E5) mAb, Azide Free

Catalog No.	CDM162A CDM162B	Quantity:	200 µg 500 µg
Alternate Names:	Complement receptor type 2, C3d receptor, Epstein-Barr virus receptor, EBV receptor, Complement C3d receptor		
Description:	Complement Component (3d/Epstein Barr Virus) Receptor 2 (CR2) is also known as CD21. CR2/CD21 is a membrane protein, which functions as a receptor for Epstein Barr Virus (EBV) binding on B- and T-lymphocytes. Genetic variations in the CR2 gene are associated with susceptibility to Systemic Lupus Erythematosus type 9 (SLEB9).		
UniProt ID:	P20023		
Gene ID:	1380		
Concentration:	1.0 mg/ml		
Specificity:	Recognizes the Epstein-Barr virus receptor (EBV R), CR2, C3d R, a 110 kDa protein. Recognizes the soluble antigen		
Hybridoma:	Myeloma X63/AG.8653 x BALB/c spleen cells		
Immunogen:	Daudi cell line		
Isotype:	Mouse IgG2a Kappa light chain		
Clone:	B-E5		
Formulation:	Sterile-filtered PBS, carrier and preservative free.		
Purification:	Ion exchange chromatography		
Biological Activity:	Induces Human B lymphocyte proliferation and competes with EBV for CD21 binding.		
Applications:	Functional studies, Flow cytometry		
Storage & Stability:	Stable for 1 year at 2-8°C. For longer storage, aliquot and store at -20°C to -80°C. Avoid repeated freeze-thaw cycles.		

A typical staining pattern with the B-E5 monoclonal antibody of lymphocytes.



NOT FOR HUMAN USE. FOR RESEARCH ONLY. NOT FOR DIAGNOSTIC OR THERAPEUTIC USE.



Cell Sciences®
65 Parker Street
Unit 11
Newburyport, MA 01950

Toll Free: 888-769-1246
Phone: 978-572-1070
Fax: 978-992-0298

E-mail: info@cellsciences.com
Website: www.cellsciences.com