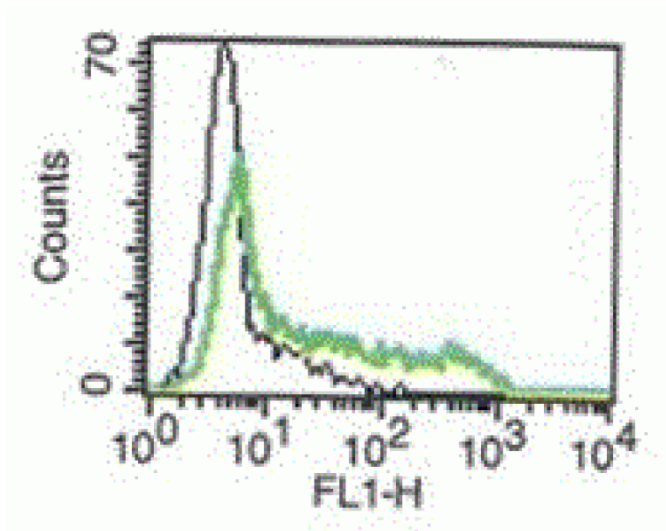


## IFNG

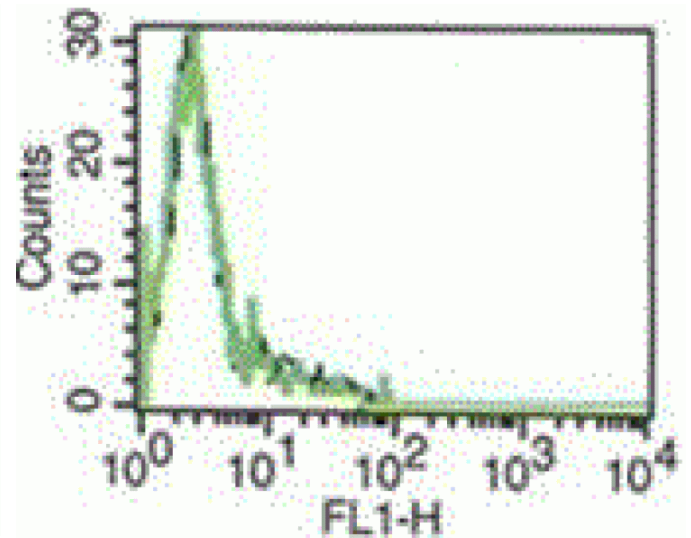
### Mouse Anti-Human IFN-gamma (Clone B-B1) mAb, Azide Free

<b>Catalog No.</b>	CDM256A CDM256B CDM256C	<b>Quantity:</b>	200 µg 500 µg 1.0 mg
<b>Alternate Names:</b>	IFG, IFI, IFNG		
<b>Description:</b>	Interferon gamma a soluble cytokine that is a member of the type II interferon class. The encoded protein is secreted by cells of both the innate and adaptive immune systems. The active protein is a homodimer that binds to the interferon gamma receptor which triggers a cellular response to viral and microbial infections. IFN-gamma has immunoregulatory and anti-tumor properties and is a potent activator of macrophages. Mutations in this gene are associated with an increased susceptibility to viral, bacterial and parasitic infections and to several autoimmune diseases.		
<b>UniProt ID:</b>	P01579		
<b>Gene ID:</b>	3458		
<b>Concentration:</b>	1.0 mg/ml		
<b>Specificity:</b>	Recognizes native and recombinant human IFN-γ.		
<b>Hybridoma:</b>	Myeloma X63/AG.8653 x Balb/c spleen cells		
<b>Isotype:</b>	Mouse IgG1 Kappa light chain		
<b>Immunogen:</b>	Recombinant Human IFN-γ		
<b>Clone:</b>	B-B1		
<b>Formulation:</b>	Sterile filtered PBS, carrier and preservative free.		
<b>Biological Activity:</b>	Inhibits IFN-gamma induced proliferation.		
<b>Applications:</b>	ELISA, ELISPOT, FC, IHC, Functional Studies.		
<b>Application Notes:</b>	<p><b>ELISA:</b> Use as a Capture Antibody at 0.5-5 µg/ml in combination with biotinylated human IFN-gamma Detection Antibody (Cat No. CDM424).</p> <p><b>ELISPOT:</b> Use as a Capture Antibody at 5-10 µg/ml.</p> <p>The optimal concentration should be determined by the user for each specific application.</p>		
<b>Storage &amp; Stability:</b>	Store at 2-8°C for up to 1 year. For longer storage, freeze aliquots at -20 to -80°C. <b>Avoid repeated freeze-thaw cycles.</b>		

The graph on the left represents activated lymphocytes marked with B-B1. Dotted line represents the IgG1 isotype control.



The graph on the right shows B-B1 with non-activated lymphocytes. Dotted line represents the IgG1 isotype control.



NOT FOR HUMAN USE. FOR RESEARCH ONLY. NOT FOR DIAGNOSTIC OR THERAPEUTIC USE.



**Cell Sciences®**  
65 Parker Street  
Unit 11  
Newburyport, MA 01950

Toll Free: 888-769-1246  
Phone: 978-572-1070  
Fax: 978-992-0298

E-mail: [info@cellsciences.com](mailto:info@cellsciences.com)  
Website: [www.cellsciences.com](http://www.cellsciences.com)