

IL1B

Mouse Anti-Human IL-1 beta (Clone B-A15) mAb, Azide Free

Catalog No.	CDM259A	Quantity:	200 µg
	CDM259B		500 µg

Alternate Names: Interleukin-1 beta, Catabolin

Description: The monoclonal antibody recognizes human IL-1 β , a member of the interleukin 1 cytokine family. This cytokine is produced by activated macrophages as a pro-protein, which is cleaved to its active form by caspase 1. This cytokine is an important mediator of the inflammatory response, and is involved in a variety of cellular activities, including cell proliferation, differentiation, and apoptosis.

UniProt ID: P01584

Gene ID: 3553

Concentration: 1.0 mg/mL

Specificity: Recognizes native (pro and mature) and recombinant human IL-1b

Hybridoma: Myeloma X63/AG.8653 x Balb/c spleen cells

Isotype: Mouse IgG1 Kappa light chain

Immunogen: Recombinant Human IL1 β

Clone: B-A15

Formulation: Sterile-filtered PBS, treated to remove endotoxin. Carrier and preservative free.

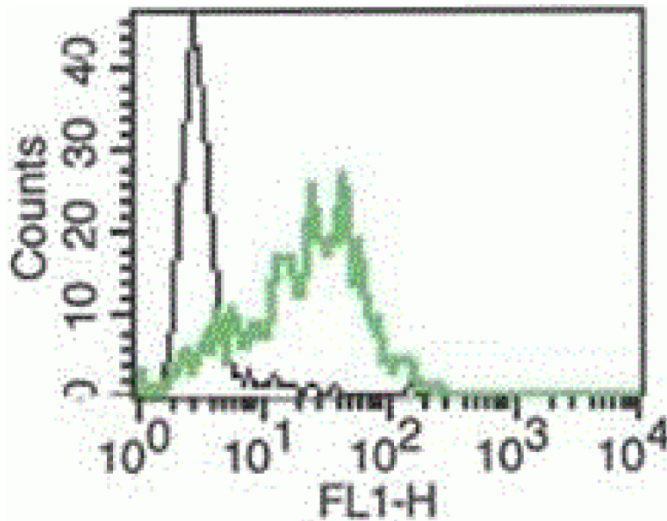
Purification: Ion exchange chromatography

Biological Activity: Inhibits IL-1 β induced proliferation on D10S murine cell line

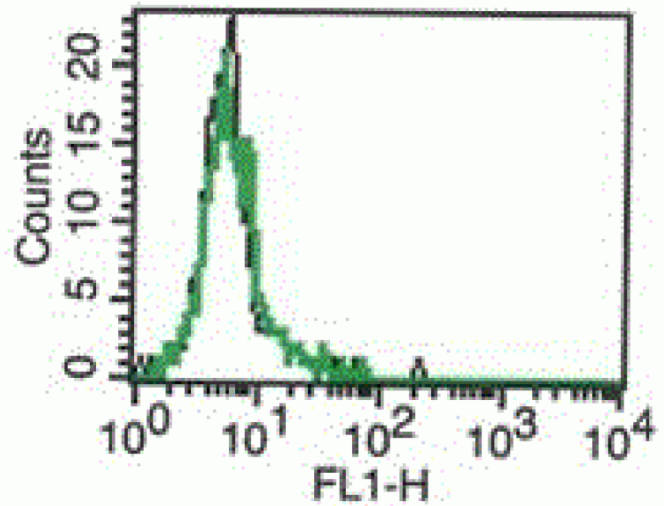
Applications: Functional Studies, ELISA, ELISpot, Intracellular flow cytometry.

Storage & Stability: Store at 2-8°C for up to 1 year. **DO NOT FREEZE.**

This graph represents activated monocytes marked with B-A15.



This graph shows B-A15 with non-activated monocytes. In each graphy, the dotted line represents the IgG1 isotype control.



NOT FOR HUMAN USE. FOR RESEARCH ONLY. NOT FOR DIAGNOSTIC OR THERAPEUTIC USE.



Cell Sciences®
65 Parker Street
Unit 11
Newburyport, MA 01950

Toll Free: 888-769-1246
Phone: 978-572-1070
Fax: 978-992-0298

E-mail: info@cellsciences.com
Website: www.cellsciences.com