

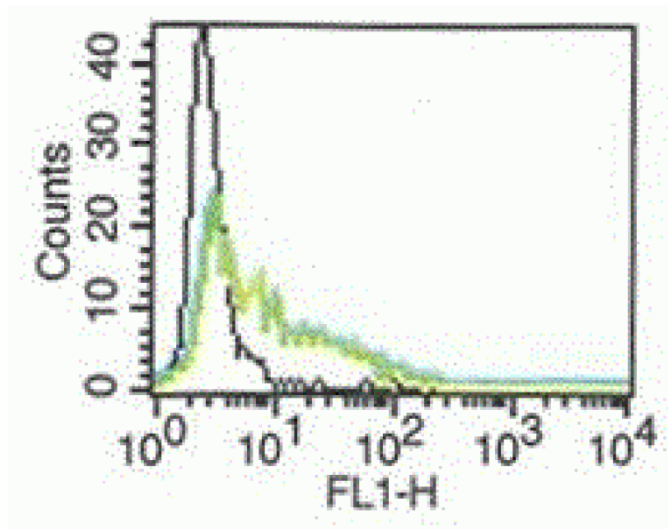
## IL6

### Mouse Anti-Human IL-6 (Clone B-E8) mAb, Azide Free

<b>Catalog No.</b>	CDM265A CDM265B CDM265C	<b>Quantity:</b>	200 µg 500 µg 1.0 mg
<b>Alternate Names:</b>	Interleukin-6, B-cell stimulatory factor 2, BSF-2, CTL differentiation factor, CDF, Hybridoma growth factor, Interferon beta-2, IFN-beta-2		
<b>Description:</b>	The monoclonal antibody recognizes IL-6, a cytokine that functions in inflammation and the maturation of B cells. In addition, IL-6 has been shown to be an endogenous pyrogen capable of inducing fever in people with autoimmune diseases or infections. The protein is primarily produced at sites of acute and chronic inflammation, where it is secreted into the serum and induces a transcriptional inflammatory response through interleukin 6 receptor, alpha.		
<b>UniProt ID:</b>	P05231		
<b>Gene ID:</b>	3569		
<b>Concentration:</b>	1.0 mg/mL		
<b>Specificity:</b>	Recognizes both native and recombinant human IL-6.		
<b>Hybridoma:</b>	Myeloma x63/AG.8653 x BALB/c spleen cells		
<b>Isotype:</b>	Mouse IgG1 Kappa light chain		
<b>Immunogen:</b>	Recombinant human IL-6		
<b>Clone:</b>	B-E8		
<b>Biological Activity:</b>	Inhibits IL-6 induced proliferation of B9 cells. Inhibits IL-6 binding to its receptor.		
<b>Formulation:</b>	Sterile filtered PBS, treated to remove endotoxins. Carrier and preservative free.		
<b>Applications:</b>	Functional Studies, Intracellular Flow Cytometry, ELISA, ELISpot		
<b>Application Notes:</b>	<b>ELISA:</b> Use as Capture Antibody at 0.5-2.5 µg/ml in a human IL-6 sandwich ELISA in combination with biotinylated human IL-6 Detection Antibody (Cat No CDM426). <b>ELISPOT:</b> Use as Capture Antibody at 5-10 µg/ml The optimal concentration should be determined by the user for each specific application.		
<b>Storage &amp; Stability:</b>	Store at 2-8 °C for up to one year. For long storage, aliquot and store at -20 °C to -80 °C. <b>Avoid repeated freeze-thaw cycles.</b>		

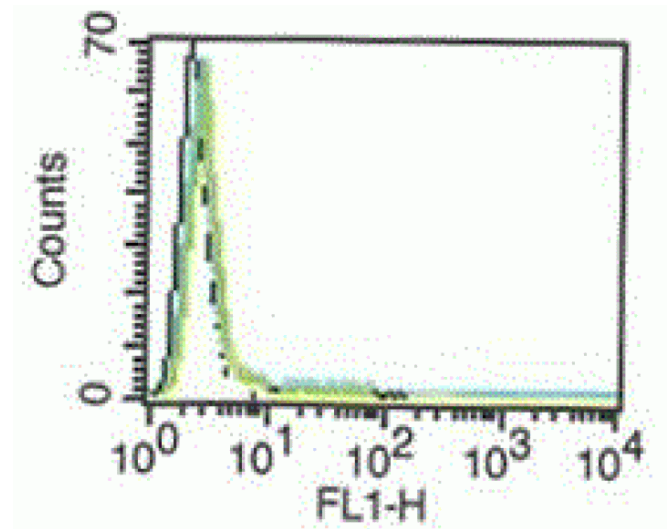


This graph shows activated monocytes with B-E8



This graph shows B-E8 with non-activated monocytes.

On both graphs the dotted line represents the IgG1 isotype control.



NOT FOR HUMAN USE. FOR RESEARCH ONLY. NOT FOR DIAGNOSTIC OR THERAPEUTIC USE.



**Cell Sciences®**  
65 Parker Street  
Unit 11  
Newburyport, MA 01950

Toll Free: 888-769-1246  
Phone: 978-572-1070  
Fax: 978-992-0298

E-mail: [info@cellsciences.com](mailto:info@cellsciences.com)  
Website: [www.cellsciences.com](http://www.cellsciences.com)