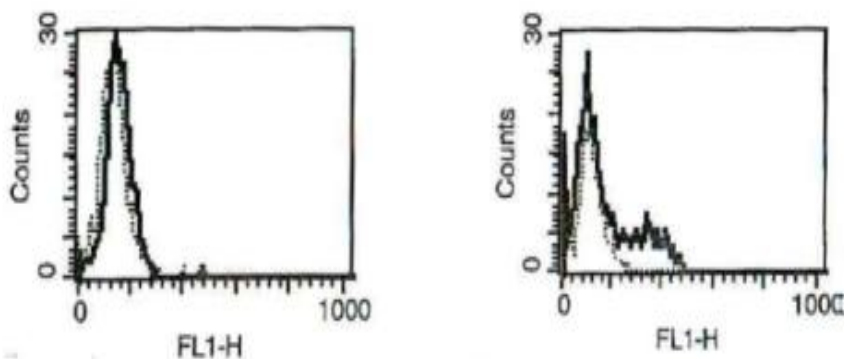


IL17F

Mouse Anti-Human IL-17F (Clone B-C52) mAb, Azide Free

| | | | |
|---------------------------------|---|------------------|------------------|
| Catalog No. | CDM455A CDM455B | Quantity: | 200 µg 500 µg |
| Alternate Names: | Interleukin-17F, ML-1 | | |
| Description: | The IL-17 family of cytokines is produced by activated T-cells CD4+ and monocytes. IL-17F has been considered as an inflammatory cytokine since it induces many proinflammatory cytokines and chemokines. IL-17F shares strongest homology to IL-17A (sharing about 50% amino acid). The IL-17A and IL-17F genes are localized in the same chromosome region. An IL-17A/F heterodimer biologically active was found to be expressed in Th17 cells together with IL-17A and IL-17F homodimers. | | |
| UniProt ID: | Q96PD4 | | |
| Gene ID: | 112744 | | |
| Concentration: | 1.0 mg/ml | | |
| Specificity: | Recognizes both recombinant and native human IL-17F Recognizes the soluble antigen and the membrane antigen. | | |
| Hybridoma: | Myeloma X63/AG.8653 x Balb/c node cells | | |
| Immunogen: | Recombinant human IL-17F | | |
| Isotype: | Mouse IgG1k | | |
| Clone: | B-C52 | | |
| Formulation: | Sterile-filtered PBS, carrier and preservative free. | | |
| Applications: | Functional studies, Flow cytometry. | | |
| Storage & Stability: | Store at 2-8°C for up to 1 year or in working aliquots at -20°C to -80°C. Avoid repeated freeze-thaw cycles. | | |

Left, Clone B-C52 with non-activated TH17 cells. Right, activated TH17 cells (5 hr by PMA-ionomycin) labeled with Clone B-C52. The dotted line represents the IgG1 isotype control.



NOT FOR HUMAN USE. FOR RESEARCH ONLY. NOT FOR DIAGNOSTIC OR THERAPEUTIC USE.



Cell Sciences®
65 Parker Street
Unit 11
Newburyport, MA 01950

Toll Free: 888-769-1246
Phone: 978-572-1070
Fax: 978-992-0298

E-mail: info@cellsciences.com
Website: www.cellsciences.com