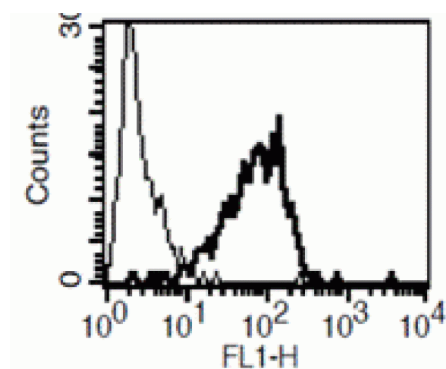


EPCAM

Mouse Anti-Human Ep-CAM / CD326 (Clone B-E54) mAb, Azide Free

Catalog No.	CDM481A CDM481B	Quantity:	200 µg 500 µg
Alternate Names:	Epithelial cell adhesion molecule, CD326, Adenocarcinoma-associated antigen, Cell surface glycoprotein Trop-1, Epithelial glycoprotein 314, EGP314		
Description:	Ep-CAM is a ~40 kDa protein that functions mainly as an epithelial cell adhesion molecule, but plays roles in such diverse processes as signaling, cell migration, proliferation, and differentiation. Ep-CAM is expressed in the majority of human carcinomas and is a marker for tumors of epithelial lineage. The antigen is also being used as a target for immunotherapy treatment of human carcinomas.		
UniProt ID:	P16422		
Gene ID:	4072		
Concentration:	1.0 mg/mL		
Specificity:	Recognizes both native and recombinant human Ep-CAM		
Hybridoma:	Myeloma X63/AG.8653 x Balb/c node cells		
Immunogen:	Recombinant human EpCAM/Fc		
Isotype:	Mouse IgG ₁ κ		
Clone:	B-E54		
Formulation:	Sterile-filtered PBS, carrier and preservative free.		
Application Notes:	Flow Cytometry		
Storage & Stability:	Store at 2-8°C for up to 1 year or in working aliquots at -20°C to -80°C. Avoid repeated freeze-thaw cycles.		

A typical staining pattern with the B-E54 monoclonal antibody of HT29 cell line



NOT FOR HUMAN USE. FOR RESEARCH ONLY. NOT FOR DIAGNOSTIC OR THERAPEUTIC USE.



Cell Sciences®
65 Parker Street
Unit 11
Newburyport, MA 01950

Toll Free: 888-769-1246
Phone: 978-572-1070
Fax: 978-992-0298

E-mail: info@cellsciences.com
Website: www.cellsciences.com