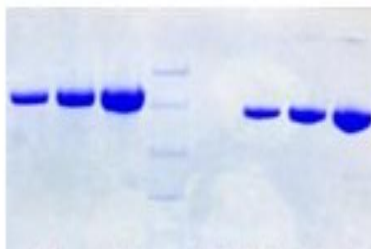


Tf

Native Canine Apotransferrin

Catalog No.	CND002A CND002B	Quantity:	1 mg 5 mg
Alternate Names:	Serotransferrin, beta-1-metal-binding globulin, siderophilin, TRF		
Description:	Apotransferrin is formed from transferrin after the dissociation of iron caused by a reduction of pH. Transferrin is a monomeric glycoprotein found in plasma at an average concentration of 250 mg/100ml. The specific iron-binding protein in plasma, it has a role in the transportation and distribution of iron among the body organs, in iron metabolism and in prevention of iron loss via the kidney. Stored in bone marrow as TF-bound iron, it also possesses bacteriostatic and fungistatic activity. Clinically, decreases in transferrin are observed in congenital disorders, newborns, inflammatory diseases, hypo-proteinemias and nephritic syndrome; increases are found in pregnancy, iron-deficiency anemias and inoculation hepatitis. Transferrin is required by all types of cells in cultures for maximal growth.		
UniProt ID	Serotransferrin		
Source:	Canine plasma		
Iron Content:	< 100 µg per gram		
Molecular Weight:	80 kDa		
Formulation:	Lyophilized from 20 mM NaH ₂ PO ₄ , pH 7.4, 150 mM NaCl		
Purity:	≥ 95% by SDS-PAGE		
Reconstitution:	Centrifuge vial prior to opening. Add sterile distilled water to a concentration of > 0.1 mg/ml and gently pipette the solution up and down the sides of the vial. DO NOT VORTEX. Allow several minutes for complete reconstitution.		
Country of Origin:	Canine plasma was obtained from healthy animals of US origin and under the care of a registered veterinarian.		
Storage & Stability:	Store lyophilized protein at -20 to -80°C for at least 1 year or reconstituted stock solution in aliquots at -20°C to -80°C. Avoid repeated freeze-thaw cycles.		

SDS-PAGE: 4 - 12% Bis-Tris NuPAGE



NOT FOR HUMAN USE. FOR RESEARCH ONLY. NOT FOR DIAGNOSTIC OR THERAPEUTIC USE.