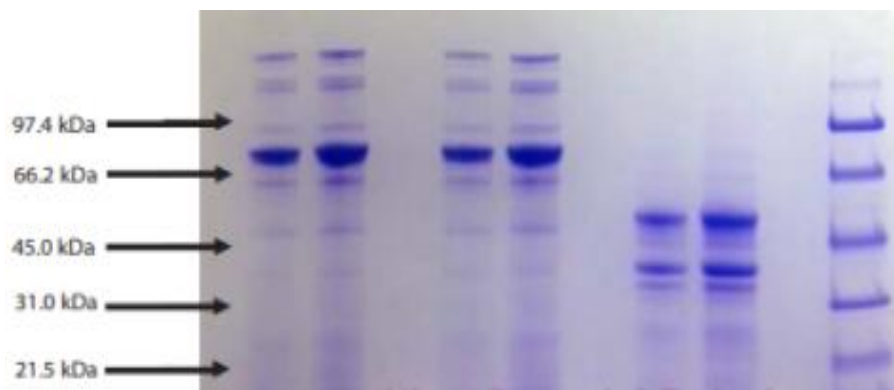


Klk1

Native Rat Kallikrein, Plasma

Catalog No.	CNR001A	Quantity:	50 µg
Alternate Names:	Plasma kallikrein, Kallikrein B1, Plasma prekallikrein (PKK)		
Description:	A serine protease that cleaves Lys-Arg and Arg-Ser bonds in kininogen to release bradykinin. Present in plasma as an inactive precursor prekallikrein, cleaved by Factor XII. Plasma kallikrein liberates kinins (bradykinin and kallidin) from the kininogens, peptides responsible for the regulation of blood pressure and activation of inflammation. It is also capable of generating plasmin from plasminogen.		
UniProt ID:	P14272		
Source:	Sprague-Dawley rat plasma		
Molecular Weight:	87 kDa		
Formulation:	11.9 mM phosphate, 137 mM NaCl, 2.7 mM KCl, pH 7.4		
Purity:	≥ 95% by SDS-PAGE analysis		
Concentration:	Lot specific		
Extinction Coefficient:	$E^{0.1\%}_{280\text{nm}} = 1.06$		
Storage & Stability:	Store at -80°C for up to 1 year. Upon initial thaw, prepare aliquots and store at -80°C. Avoid repeated freeze-thaw cycles.		
Infectious Disease Statement:	Prepared from Sprague-Dawley Rat Plasma taken from healthy animals with no signs of quarantinable or exotic disease housed at a USDA-licensed facility.		
Country of Origin:	USA		

SDS-PAGE: 4-12% Bis-Tris NuPAGE
non-reduced and reduced



NOT FOR HUMAN USE. FOR RESEARCH ONLY. NOT FOR DIAGNOSTIC OR THERAPEUTIC USE.