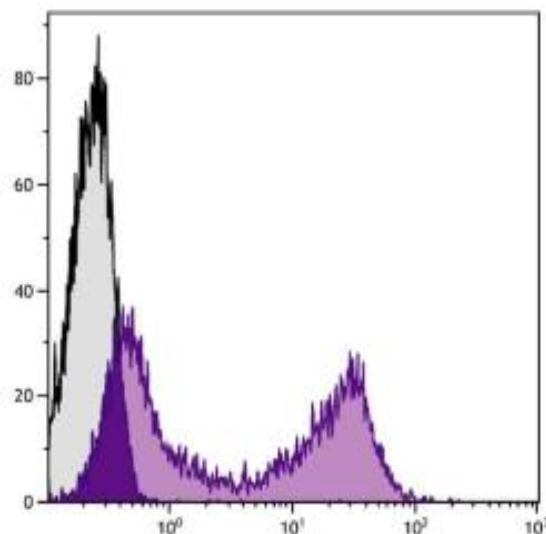
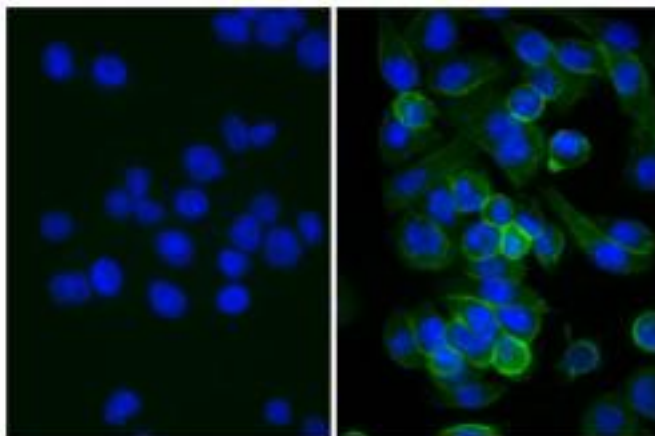


Streptavidin-FITC

Catalog No.	CPO014	Quantity:	500 µg
Description:	Streptavidin-FITC		
Concentration:	1.0 mg/mL		
Source:	Recombinant <i>E. coli</i> -derived		
Specificity:	Biotin		
Conjugate:	FITC (Fluorescein)		
Formulation:	PBS containing 0.1% NaN ₃ .		
Applications:	Flow Cytometry, FLISA, Immunohistochemistry, Immunocytochemistry		
Application Notes:	Working dilution; Flow Cytometry ≤ 1 µg/10 ⁶ cells, FLISA 1:100 - 1:400. Since applications vary, you should determine the optimum working dilution for the product that is appropriate for your specific need.		
Storage & Stability:	Store at 2-8°C. DO NOT FREEZE		

Human pancreatic carcinoma cell line MIA PaCa-2 was stained with Mouse Anti-Human CD44 (right) followed by Rabbit Anti-Mouse IgG(H+L) BIOT (Cat. No. CPM038) and then Streptavidin-FITC and DAPI.

Rabbit blood peripheral lymphocytes were stained with Rat Anti-Rabbit Ig-BIOT (Cat. No. CMB005) followed by Streptavidin-FITC.



NOT FOR HUMAN USE. FOR RESEARCH ONLY. NOT FOR DIAGNOSTIC OR THERAPEUTIC USE.