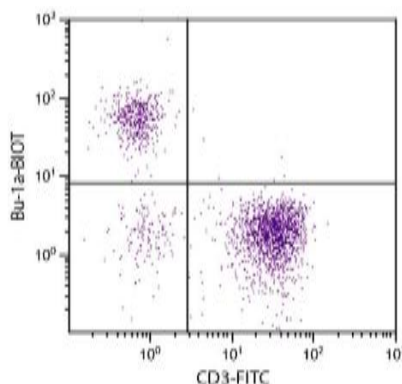


## Streptavidin-Phycoerythrin

<b>Catalog No.</b>	CPO018	<b>Quantity:</b>	500 µg
<b>Description:</b>	Streptavidin-PE		
<b>Concentration:</b>	500 µg/mL		
<b>Source:</b>	Recombinant <i>E. coli</i> -derived		
<b>Specificity:</b>	Biotin		
<b>Conjugate:</b>	R-phycoerythrin, PE		
<b>Formulation:</b>	PBS, containing NaN <sub>3</sub> and a stabilizing agent.		
<b>Applications:</b>	ELISA, FLISA, Flow Cytometry, ELISPOT, Immunohistochemistry, Immunocytochemistry, Western Blot, Multiplex and Microarray.		
<b>Application Notes:</b>	Working dilution FLISA ≤ 1 µg/mL, for Flow Cytometry ≤ 1µg/10 <sup>6</sup> cells. Since applications vary, you should determine the optimum working dilution for the product that is appropriate for your specific need.		
<b>Storage &amp; Stability:</b>	Store at 2-8°C. <b>DO NOT FREEZE</b>		

Chicken peripheral blood mononuclear cells were stained with Mouse Anti-Chicken Bu-1a-BIOT and Mouse Anti-Chicken CD3-FITC followed by Streptavidin-PE.



**NOT FOR HUMAN USE. FOR RESEARCH ONLY. NOT FOR DIAGNOSTIC OR THERAPEUTIC USE.**