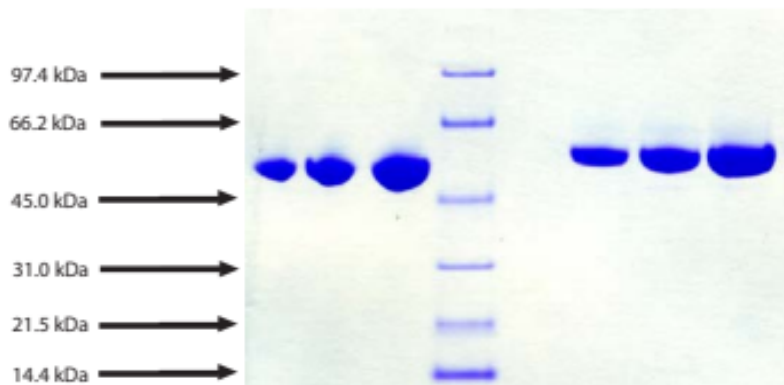


SERPINC1

Native Human Antithrombin-III

Catalog No.	CRA162A CRA162B	Quantity:	100 µg 1.0 mg
Alternate Names:	Antithrombin-III, ATIII, Serpin C1		
Description:	Human Antithrombin III is a serine protease inhibitor that inactivates several enzymes of the coagulation system, thrombin, matriptase-3/TMPRSS7, as well as factors IXa, Xa and XIa. Human Antithrombin is a glycoprotein produced by the liver and a member of a larger family of antithrombins (numbered I, II etc. to VI), all of which are serpins. Potency is enhanced by heparin. Reduced levels are indicative of hypercoagulability. Normal serum level is 15 mg/dl. Higher levels in plasma vs. serum because of complexing with thrombin during coagulation.		
Uniprot ID:	P01008		
Source:	Human Plasma		
Molecular Weight:	58.0 kDa		
Formulation:	Lyophilized from 50 mM Tris-HCl, pH 8.0 with 150 mM sodium chloride.		
Purity:	≥ 95% (SDS-PAGE)		
Extinction Coefficient:	$E^{0.1\%}_{280\text{nm}} = 1.46$		
Reconstitution:	Centrifuge vial prior to opening. Add sterile distilled water to a concentration of 0.1 -1.0 mg/mL and gently pipette the solution up and down the sides of the vial. DO NOT VORTEX. Allow several minutes for complete reconstitution.		
Storage & Stability:	Upon receipt, store lyophilized protein at -20 to -80°C for 1 year or reconstituted stock solution in aliquots at -20°C to -80°C. Avoid repeated freeze-thaw cycles.		
Infectious Disease Statement:	Prepared from plasma shown to be non reactive for HBsAg, anti-HCV, anti-HBc, and negative for anti-HIV 1 & 2 by FDA approved tests.		

SDS-PAGE:
4-12% Bis-Tris NuPAGE gel
Non-reduced and reduced



cellsciences.com

NOT FOR HUMAN USE. FOR RESEARCH ONLY. NOT FOR DIAGNOSTIC OR THERAPEUTIC USE.



Cell Sciences®
65 Parker Street
Unit 11
Newburyport, MA 01950

Toll Free: 888-769-1246
Phone: 978-572-1070
Fax: 978-992-0298

E-mail: info@cellsciences.com
Website: www.cellsciences.com