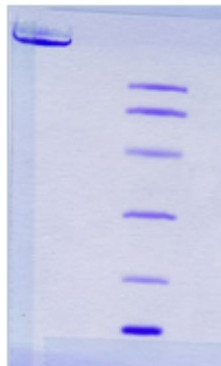


LPA

Native Human Lipoprotein(a), Plasma

Catalog No.	CRA169A CRA169B	Quantity:	100 µg 1 mg
Alternate Names:	Lipoprotein(a), Lp(a), LPA, Apolipoprotein(a), Apo(a)		
Description:	Lipoprotein(a) [Lp(a)] consists of an LDL-like particle and the specific apolipoprotein(a). Lp(a) plasma concentrations are highly heritable, thus in different ethnic groups, different genetic alterations were associated with increased Lp(a) levels. Lp(a) contributes to the process of atherogenesis. The structure of apolipoprotein(a) is similar to plasminogen and tPA (tissue plasminogen activator) and it competes with plasminogen for its binding site, leading to reduced fibrinolysis. Lp(a) stimulates secretion of PAI-1, it leads to thrombogenesis. Elevated Lp(a) correlates with coronary heart disease (CHD), cardiovascular disease (CVD), atherosclerosis, thrombosis, and stroke.		
UniProt ID:	P08519		
Source:	Human plasma		
Molecular Weight:	280-700 kDa		
Formulation:	1 X PBS, without preservative		
Purity:	>95% by SDS-PAGE analysis Essentially free of other plasma lipoproteins as determined by electrophoresis using a SPIFE Vis Cholesterol gel kit for lipids and Coomassie Blue for proteins.		
Concentration:	1 mg/ml, lot specific, determined by Macra Lp(a) EIA		
Density:	1.063-1.10 g/ml		
Composition:	60 - 65% lipid 27% protein 8% carbohydrate		
Storage & Stability:	Store unopened at 2-8°C for up to 1 year. DO NOT FREEZE.		
Infectious Disease Statement:	Prepared from plasma shown to be non reactive for HbsAG, anti-HCV, anti-HBc, and negative for anti-HIV 1 & 2 by FDA approved tests.		

SDS-PAGE of Lp(a)



cellsciences.com

NOT FOR HUMAN USE. FOR RESEARCH ONLY. NOT FOR DIAGNOSTIC OR THERAPEUTIC USE.



Cell Sciences®
65 Parker Street
Unit 11
Newburyport, MA 01950

Toll Free: 888-769-1246
Phone: 978-572-1070
Fax: 978-992-0298

E-mail: info@cellsciences.com
Website: www.cellsciences.com