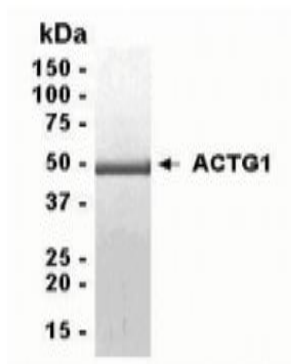


## ACTG1

### Recombinant Human ACTG1

<b>Catalog No.</b>	CRA409	<b>Quantity:</b>	50 µg
<b>Alternate Names:</b>	Actin cytoplasmic 2, Gamma-actin		
<b>Description:</b>	Actins are highly conserved proteins that are involved in various types of cell motility, and maintenance of the cytoskeleton. In vertebrates, three main groups of actin isoforms, alpha, beta and gamma have been identified. The alpha actins are found in muscle tissues and are a major constituent of the contractile apparatus. The beta and gamma actins co-exist in most cell types as components of the cytoskeleton, and as mediators of internal cell motility. Actin, gamma 1, encoded by this gene, is a cytoplasmic actin found in non-muscle cells. Mutations in this gene are associated with DFNA20/26, a subtype of autosomal dominant non-syndromic sensorineural progressive hearing loss. Alternative splicing results in multiple transcript variants		
<b>UniProt ID:</b>	P63261		
<b>Gene ID:</b>	71		
<b>Source:</b>	<i>E. coli</i>		
<b>Molecular Weight:</b>	41.8 kDa (aa 1-375)		
<b>Formulation:</b>	10 mM Tris, pH 8.0 containing 0.01% Triton X-100 and 0.002% sodium azide. <b>Precaution:</b> Sodium azide is a poisonous and hazardous substance which should be handled by trained staff only.		
<b>Purity:</b>	> 95% bt SDS-PAGE		
<b>Applications:</b>	Western blot, ELISA, MS		
<b>Domain:</b>	aa. 1-375		
<b>Storage &amp; Stability:</b>	Store at -80°C for up to 1 year. Upon initial thaw, store single use aliquots at -80°C.		

4-20% gradient SDS-PAGE with Coomassie blue



NOT FOR HUMAN USE. FOR RESEARCH ONLY. NOT FOR DIAGNOSTIC OR THERAPEUTIC USE.



**Cell Sciences®**  
65 Parker Street  
Unit 11  
Newburyport, MA 01950

Toll Free: 888-769-1246  
Phone: 978-572-1070  
Fax: 978-992-0298

E-mail: [info@cellsciences.com](mailto:info@cellsciences.com)  
Website: [www.cellsciences.com](http://www.cellsciences.com)