

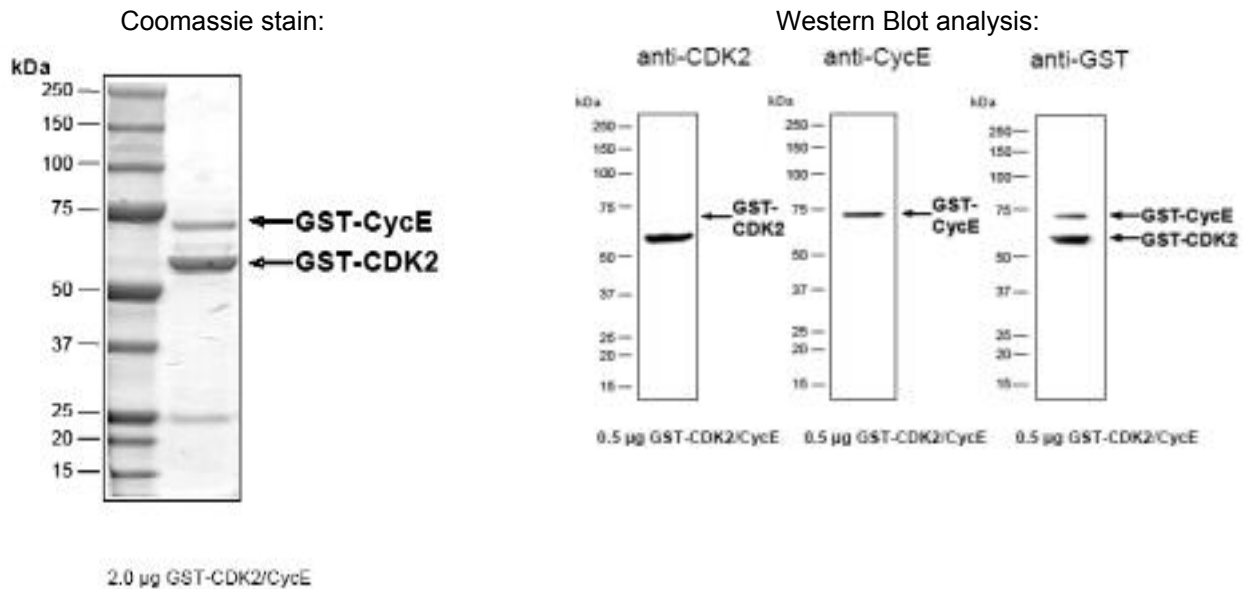
CDK2/CCNE1

Recombinant Human Cyclin-Dependent Kinase 2 (aa 1-298) /Cyclin E1 (aa 1-395) Complex GST-His-Tagged Active

Catalog No.	CRC030A	Quantity:	10 µg
Alternate Names:	p33 CCNE		
Description:	Coexpression of human CDK2, amino acids M ₁ – L ₂₉₈ (as in GenBank entry NM_001798)* and human CCNE1, amino acids M ₁ – A ₃₉₅ (as in GenBank entry M73812)*, both N-terminally fused to GST-Thrombin cleavage site. *Sequence may contain documented polymorphisms. Detailed sequence available upon request.		
Concentration:	0.243 mg/ml		
Source:	Sf9 cells		
Molecular Weight:	CDK2: 60.2 kDa CCNE1: 72.0 kDa		
Formulation:	Liquid in 50 mM Tris-HCl, pH 8.0 + 100 mM NaCl + 5 mM DTT + 15 mM reduced glutathione + 20% glycerol		
Purification:	Affinity purified using GSH-agarose		
Specific Activity:	241 pmol/µg x min Method for determination of K _m value & Specific activity: Assay conditions: 60 mM HEPES-NaOH, pH 7.5 3 mM MgCl ₂ 3 mM MnCl ₂ 3 µM Na-orthovanadate 1.2 mM DTT 2.5 µg / 50 µl PEG _{20,000} ATP (variable) Substrate: RB-CTF, 5 µg / 50 µl Recombinant CDK2/CCNE1: 50 ng / 50 µl Filter binding assay MSFC membrane (Millipore)		



Storage & Stability: Store in working aliquots at -80°C. **Avoid repeated freeze-thaw cycles.**



NOT FOR HUMAN USE. FOR RESEARCH ONLY. NOT FOR DIAGNOSTIC OR THERAPEUTIC USE.



Cell Sciences®
480 Neponset Street
Bldg 12A
Canton, MA 02021

Toll Free: 888-769-1246
Phone: 781-828-0610
Fax: 781-828-0542

E-mail: info@cellsciences.com
Website: www.cellsciences.com