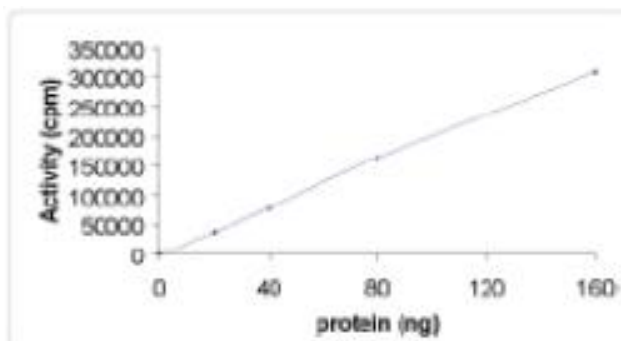


CSNK2A1

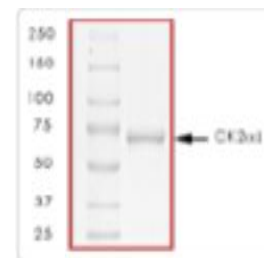
Recombinant Human CK2 alpha 1, Active

Catalog No.	CRC110A	Quantity:	5 µg
	CRC110B		10 µg
Alternate Names:	Casein kinase II subunit alpha, CK2A1, CK2-alpha, CKII alpha		
Description:	Casein kinase 2 (CK2) is a ubiquitous pleiotropic proliferation-associated serine/threonine protein kinase. The enzyme is probably present in all eukaryotic cells, implying that it has fundamental cellular functions. It is highly expressed in a lympho-proliferative disease of cattle and in many human cancers.		
	Recombinant full length human CK2 alpha 1 was expressed in Sf9 insect cells with a N-terminal GST tag. The alpha-subunit is constitutively active and suitable for labeling casein kinase 2 alpha substrates.		
UniProt ID:	P68400		
GeneID:	1457		
Source:	Sf9 insect cells		
Molecular Weight:	70 kDa		
Formulation:	50 mM Tris-HCl, 150 mM NaCl, 0.25 mM DTT, 0.1 mM EGTA, 0.1 mM EDTA, 0.1 mM PMSF, pH 7.5 containing 25% glycerol		
Purity:	> 95% by SDS-PAGE		
Concentration:	0.1 mg/ml		
Specific Activity:	Lot specific, ~100 nmole/min/mg with a casein substrate, [³² P]-ATP in a MOPS buffer. Protocol available.		
Storage & Stability:	Upon receipt store at -80°C for up to 1 year. On initial thaw, centrifuge vial briefly to consolidate the product. Prepare aliquots of the stock solution and store at -80°C. Avoid repeated freeze-thaw cycles.		

Kinase Activity



SDS-PAGE



NOT FOR HUMAN USE. FOR RESEARCH ONLY. NOT FOR DIAGNOSTIC OR THERAPEUTIC USE.



Cell Sciences®
65 Parker Street
Unit 11
Newburyport, MA 01950

Toll Free: 888-769-1246
Phone: 978-572-1070
Fax: 978-992-0298

E-mail: info@cellsciences.com
Website: www.cellsciences.com