

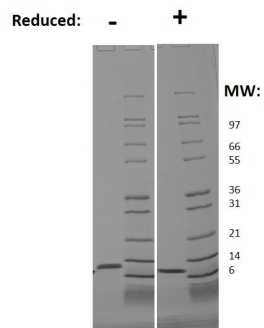
CCL11

Recombinant Human CCL11 / Eotaxin

Catalog No.	CRE000A CRE000B CRE000C CRE000D	Quantity:	5 µg 20 µg 1.0 mg 100 µg
Alternate Names:	Eotaxin, C-C motif chemokine 11, CCL11, Eosinophil chemotactic protein, Small-inducible cytokine A11, SCYA11		
Description:	CCL11 is a potent eosinophil chemoattractant that was originally purified from bronchoalveolar lavage fluid of guinea pigs sensitized by aerosol challenge with ovalbumin. Human CCL11 cDNA encodes a 97 amino acid residue precursor protein from which the amino terminal 23 amino acid residues are cleaved to generate the 74 amino acid residue mature human CCL11. At Mature human CCL11 is approximately 60% sequence identity with mature mouse and guinea pig CCL11. Human CCL11 is chemotactic for eosinophils, but not mononuclear cells or neutrophils. The CC chemokine receptor 3 (CCR3) has now been identified to be a specific human CCL11 receptor. CCR3 has also been shown to serve as a cofactor for a restricted subset of primary HIV viruses and binding of CCL11 to CCR3 inhibited infection by the HIV isolates.		
UniProt ID:	P51671		
Gene ID:	6356		
Source:	<i>E. coli</i>		
Molecular Weight:	8.4 kDa (74 aa) monomer		
Formulation:	Lyophilized from a sterile-filtered aqueous solution containing 0.1% Trifluoroacetic acid (TFA)		
Purity:	≥ 95% by reducing and non-reducing SDS-PAGE		
Endotoxin Level:	≤ 1 EU/µg by kinetic LAL assay		
Biological Activity:	No data available		
Amino Acid Sequence:	GPASVPTTCC FNLANRKIPL QRLESYRRIT SGKCPQKAVI FKTKLAKDIC ADPKKKWVQD SMKYLDQKSP TPKP		
Reconstitution:	Centrifuge vial prior to opening. Add sterile distilled water to a concentration of 0.1 mg/mL and gently pipette the solution up and down the sides of the vial. DO NOT VORTEX. Allow several minutes for complete reconstitution.		
Storage & Stability:	Store as supplied at -20°C to -80°C for up to 1 year. Upon reconstitution, store at 2-8°C for up to 1 month or prepare working aliquots and store at -20°C to -80°C for up to 3 months. It is recommended that a carrier protein such as 0.1% HSA or BSA is added for long term storage. Avoid repeated freeze-thaw cycles.		



SDS-PAGE



NOT FOR HUMAN USE. FOR RESEARCH ONLY. NOT FOR DIAGNOSTIC OR THERAPEUTIC USE.



Cell Sciences®
65 Parker Street
Unit 11
Newburyport, MA 01950

Toll Free: 888-769-1246
Phone: 978-572-1070
Fax: 978-992-0298

E-mail: info@cellsciences.com
Website: www.cellsciences.com