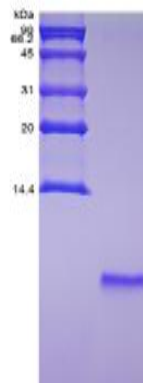


## Recombinant Exendin-4

<b>Catalog No.</b>	CRE117A CRE117B CRE117C	<b>Quantity:</b>	20 µg 100 µg 1.0 mg
<b>Alternate Names:</b>	Exenatide		
<b>Description:</b>	Exendin-4 mimics the incretin hormone glucagon-like peptide 1 (GLP-1) and shares 53% sequence homology with GLP-17-36 amide. Interacts with the same membrane receptor, GLP1R, and induces hypotension that is mediated by relaxation of cardiac smooth muscle. The native hormone is found in the venom of the Gila monster ( <i>Heloderma suspectum</i> ). Exendin-4 enhances glucose-dependent insulin secretion, suppresses inappropriately elevated glucagon secretion, and slows gastric emptying <i>in vivo</i> . It also promotes β-cell proliferation and neogenesis <i>in vitro</i> and in animal models.		
<b>UniProt ID:</b>	P26349		
<b>Source:</b>	<i>E. coli</i>		
<b>Molecular Weight:</b>	~4.2 kDa (39 aa)		
<b>Formulation:</b>	Lyophilized from sterile-filtered 20 mM PBS, pH 7.0, containing 4% mannitol.		
<b>Purity:</b>	> 96.0% as determined by SDS PAGE and HPLC analyses.		
<b>Endotoxin Level:</b>	Less than 1 EU/µg of rRpExendin-4 as determined by LAL method.		
<b>Biological Activity:</b>	<ol style="list-style-type: none"> <li>1. Regulates Glucose levels rapidly;</li> <li>2. Reduces Insulin resistance;</li> <li>3. Reduces Glucagon;</li> <li>4. Reduces HbA1c;</li> <li>5. Stimulates beta cell growth which stimulates insulin production.</li> </ol>		
<b>Amino Acid Sequence:</b>	HGEGTFTSDL SKQMEEEAVR LFIEWLKNGG PSSGAPPPS		
<b>Reconstitution:</b>	<b>Centrifuge vial prior to opening.</b> Add sterile distilled water or aqueous buffer to a concentration of 0.1-1.0 mg/ml. Further dilutions should be made in appropriate buffered solutions.		
<b>Storage &amp; Stability:</b>	Upon receipt store at -20°C to -80°C for up to 1 year. Upon reconstitution, the preparation is stable for up to one week at 2-8°C. For maximal stability, apportion the reconstituted preparation into working aliquots and store at -20°C to -80°C. <b>Avoid repeated freeze/thaw cycles.</b>		

SDS-PAGE



NOT FOR HUMAN USE. FOR RESEARCH ONLY. NOT FOR DIAGNOSTIC OR THERAPEUTIC USE.