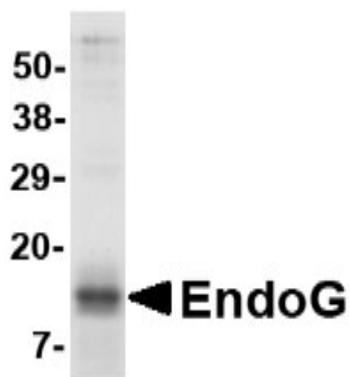


ENDO G

Recombinant Human Endonuclease G, Mitochondrial His/StrepII Tag

Catalog No.	CRE122	Quantity:	50 µg
Alternate Names:	Endo G		
Description:	<p>The fragmentation of nuclear DNA is a hallmark of apoptotic cell death. The activities of caspase and nuclease are involved in the DNA fragmentation. Caspase-activated deoxyribonuclease (CAD), also termed DNA fragmentation factor (DFF40), is one such nuclease, and is capable of inducing DNA fragmentation and chromatin condensation after cleavage by caspase-3 of its inhibitor ICAD/DFF45. Caspase and CAD independent DNA fragmentation also exists. Recent studies demonstrated that another nuclease, endonuclease G (EndoG), is specifically activated by apoptotic stimuli and is able to induce nucleosomal fragmentation of DNA independently of caspase and DFF/CAD. EndoG is a mitochondrion-specific nuclease that translocates to the nucleus and cleaves chromatin DNA during apoptosis. The homologue of mammalian EndoG is the first mitochondrial protein identified to be involved in apoptosis in <i>C. elegans</i>. EndoG also cleaves DNA <i>in vitro</i>.</p>		
UniProt ID:	Q14249		
Source:	<i>E. coli</i>		
Molecular Weight:	15 kDa (aa 51-140)		
Formulation:	PBS containing 0.1% SDS and 0.02% NaN ₃ .		
Purity:	~95% by SDS-PAGE		
Fusion Partner:	His-tag and strepII-tag at N-terminus		
Applications:	Western blot, ELISA		
Storage & Stability:	Store at -80°C for up to 1 year. Upon initial thaw, store single use aliquots at -80°C.		

4-20% gradient SDS-PAGE with Coomassie Blue



cellsciences.com

NOT FOR HUMAN USE. FOR RESEARCH ONLY. NOT FOR DIAGNOSTIC OR THERAPEUTIC USE.



Cell Sciences®
65 Parker Street
Unit 11
Newburyport, MA 01950

Toll Free: 888-769-1246
Phone: 978-572-1070
Fax: 978-992-0298

E-mail: info@cellsciences.com
Website: www.cellsciences.com