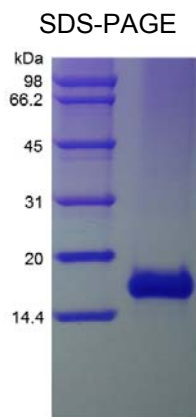


## CCL21

### Recombinant Human Exodus-2/CCL21

<b>Catalog No.</b>	CRE400A CRE400B CRE400C	<b>Quantity:</b>	5 µg 20 µg 1.0 mg
<b>Alternate Names:</b>	CKb9, ECL, SCYA21, SLC, TCA4, CCL21, Exodus 2, 6Ckine		
<b>Gene ID:</b>	6366		
<b>Protein Accession No:</b>	O00585		
<b>Description:</b>	<p>Recombinant human Exodus 2 is a single, non-glycosylated polypeptide chain containing 111 amino acids.</p> <p>Background: CCL21 is encoded by CCL21 gene that is located in Chr. 9 and shows 21-33 % identity to other CC chemokines. This chemokine contains the four conserved cysteines characteristic of <math>\beta</math> chemokines plus two additional cysteines in its unusually long carboxylterminal domain. CCL21 is highly expressed in lymph nodes of certain endothelial cells, and in the spleen and appendix. It elicits effects by binding with CCR7, having functions of T and B lymphocytes chemotaxis and inhibiting hematopoiesis.</p>		
<b>Source:</b>	<i>E. coli</i>		
<b>Molecular Weight:</b>	12.2 kDa		
<b>Formulation:</b>	Lyophilized from a sterile filtered solution in 20 mM PB, pH 7.4 + 150 mM NaCl.		
<b>Purity:</b>	> 97% as determined by HPLC and SDS-PAGE analyses		
<b>Endotoxin Level:</b>	Less than 1 EU/µg of recombinant human Exodus-2/CCL21 as determined by LAL method.		
<b>Biological Activity:</b>	Fully biologically active when compared to standard. The biological activity determined by a chemotaxis bioassay using human lymphocytes is in a concentration range of 10-100 ng/ml.		
<b>Amino Acid Sequence:</b>	SDGGAQDCCL KYSQRKIPAK VVRSYRKQEP SLGCSIPAIL FLPRKRSQAE LCADPKELWV QQLMQHLDKT PSPQKPAQGC RKDRGASKTG KKGKGSKGCK RTERSQTPKG P		
<b>Reconstitution:</b>	<b>Centrifuge vial prior to opening.</b> Add sterile distilled water or aqueous buffer to a concentration of 0.1-1.0 mg/mL. Further dilutions should be made in appropriate buffered solutions.		
<b>Storage &amp; Stability:</b>	Stable at 2-8°C, but best kept desiccated -20°C. Upon reconstitution, stable for up to 1 week at 2-8°C. For longer term, store in working aliquots below -20°C. <b>Avoid repeated freeze/thaw cycles.</b>		





NOT FOR HUMAN USE. FOR RESEARCH ONLY. NOT FOR DIAGNOSTIC OR THERAPEUTIC USE.



**Cell Sciences®**  
65 Parker Street  
Unit 11  
Newburyport, MA 01950

Toll Free: 888-769-1246  
Phone: 978-572-1070  
Fax: 978-992-0298

E-mail: [info@cellsciences.com](mailto:info@cellsciences.com)  
Website: [www.cellsciences.com](http://www.cellsciences.com)