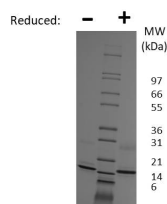


## Ccl21a

### Recombinant Mouse Exodus-2 / CCL21

<b>Catalog No.</b>	CRE401A CRE401B CRE401C	<b>Quantity:</b>	5 µg 20 µg 1 mg
<b>Alternate Names:</b>	C-C motif chemokine 21a, 6CKine, Beta-chemokine exodus-2, Small-inducible cytokine A21a, Thymus-derived chemotactic agent 4, TCA4		
<b>Description:</b>	Exodus-2, also known as CCL2, is a chemokine that is strongly produced in the human lymph nodes and spleen. Exodus-2 signals through the chemokine receptor CCR7 to regulate thymocyte and activated T cell migration. Exodus-2 also mediates the homing of lymphocytes to the lymphatic system. Human and mouse Exodus-2 proteins share greater than 85% amino acid sequence identity.		
<b>UniProt ID:</b>	P84444		
<b>Gene ID:</b>	18829		
<b>Source:</b>	<i>E. coli</i>		
<b>Molecular Weight:</b>	12.1 kDa (110 aa) monomer		
<b>Formulation:</b>	Lyophilized from a sterile-filtered solution containing 0.1% Trifluoroacetic Acid (TFA)		
<b>Purity:</b>	≥ 95% by reducing and non-reducing SDS-pAGE		
<b>Endotoxin Level:</b>	≤ 1 EU/µg determined by kinetic LAL analysis		
<b>Amino Acid Sequence:</b>	SDGGGQDCCL KYSQKKIPYS IVRGYRKQEP SLGCPIPAIL FLPRKHSKPE LCANPEEGWV QNLMRRLDQP PAPGKQSPGC RKNRGTSKSG KKGKGSKGCK RTEQTQPSRG		
<b>Reconstitution:</b>	<b>Centrifuge vial prior to opening.</b> Add sterile distilled water to a concentration of 0.1 mg/mL and gently pipet the solution up and down the sides of the vial. <b>DO NOT VORTEX.</b> Allow several minutes for reconstitution.		
<b>Storage &amp; Stability:</b>	Store as supplied at -20°C to -80°C for up to 1 year. Upon reconstitution, prepare working aliquots and store at -20°C to -80°C. It is recommended that a carrier protein such as 0.1% HSA or BSA is added for long term storage. <b>Avoid repeated freeze-thaw cycles.</b>		



**Mouse Exodus-2 / CCL21 Gel**

Figure: 1 ug run under (-) non-reducing conditions and (+) reducing conditions in a 4-20% Tris-Glycine gel, stained with Coomassie Blue. Mouse Exodus-2 / CCL21 is predicted to have a MW of 12 kDa.

**NOT FOR HUMAN USE. FOR RESEARCH ONLY. NOT FOR DIAGNOSTIC OR THERAPEUTIC USE.**



**Cell Sciences®**  
65 Parker Street  
Unit 11  
Newburyport, MA 01950

Toll Free: 888-769-1246  
Phone: 978-572-1070  
Fax: 978-992-0298

E-mail: [info@cellsciences.com](mailto:info@cellsciences.com)  
Website: [www.cellsciences.com](http://www.cellsciences.com)