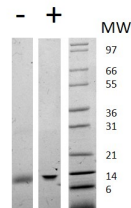


LGALS1

Recombinant Human Galectin-1, Animal Free

Catalog No.	CRG000A-AF CRG000B-AF CRG000C-AF	Quantity:	10 µg 50 µg 1.0 mg
Alternate Names:	Beta-galactoside-binding lectin L-14-I, Galaptin, S-LAC lectin-I, L-14		
Gene ID:	3956		
UniProt ID:	P09382		
Description:	<p>Galectin-1 belongs to a large family of carbohydrate-binding proteins called lectins. Galectin-1 can be either monomeric or homodimeric and is found in a wide variety of cells and tissue types. Galectin-1 can control cell growth, proliferation, induce apoptosis of activated T cells while it can also modulate cytokine secretion or inhibit pro-inflammatory cytokine production. Galectin-1 plays an important role in acute and chronic inflammation.</p> <p>Made without animal-derived components in an animal-free facility.</p>		
Source:	<i>E. coli</i>		
Molecular Weight:	14.7 kDa (135 aa) monomer		
Formulation:	Lyophilized from a sterile (0.2 micron) filtered aqueous solution containing 10 mM sodium phosphate, pH 7.5		
Purity:	≥95% as determined by reducing and non-reducing SDS-PAGE		
Endotoxin Level:	≤ 1 EU/µg , by kinetic LAL analysis		
Amino Acid Sequence:	MACGLVASNL NLKPGECLRV RGEVAPDAKS FVLNLGKDSN NLCLHFNPRF NAHGDANTIV CNSKDGGAWG TEQREAVFPF QPGSVAEVC I TFDQANLTVK LPDGYEFKFP NRLNLEAINY MAADGDFKIK CVAFD		
Reconstitution:	<p>Centrifuge vial prior to opening. When reconstituting the product, gently pipet and wash down the sides of the vial to ensure full recovery of the protein into solution. It is recommended to reconstitute the lyophilized product with sterile water at a concentration of 0.1 mg/mL, which can be further diluted into other aqueous solutions.</p>		
Storage & Stability:	<p>Store as supplied at -20°C to -80°C for up to 1 year. Upon reconstitution, prepare working aliquots and store at -20°C to -80°C. It is recommended that a carrier protein such as 0.1% HSA or BSA is added for long term storage.</p> <p>Avoid repeated freeze-thaw cycles.</p>		





Human Galectin-1

Figure: 1 ug under (+) reducing and (-) non-reducing conditions in a 4-20% Tris-Glycine gel, stained with Coomassie Blue. Human Galectin-1 has a predicted MW of 14.5 kDa.

NOT FOR HUMAN USE. FOR RESEARCH ONLY. NOT FOR DIAGNOSTIC OR THERAPEUTIC USE.



Cell Sciences®
65 Parker Street
Unit 11
Newburyport, MA 01950

Toll Free: 888-769-1246
Phone: 978-572-1070
Fax: 978-992-0298

E-mail: info@cellsciences.com
Website: www.cellsciences.com