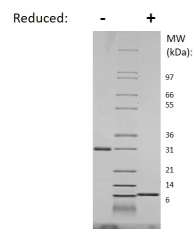


## Retnlg

## Recombinant Mouse RELM-Gamma, Animal Free

<b>Catalog No.</b>	CRG010A-AF CRG010B-AF CRG010C-AF	<b>Quantity:</b>	5 µg 25 µg 1.0 mg
<b>Alternate Names:</b>	Resistin-like molecule gamma, RELMgamma, Ten-cysteine protein 1, XCP1		
<b>Description:</b>	Resistin-like molecule-gamma (RELM-γ) is a member of the RELM family of secreted proteins containing C-terminal cysteines. The RELM family consists of Resistin (FIZZ3), RELM-α (FIZZ1), RELM-β (FIZZ2), and RELM-γ (FIZZ4). RELM-γ is secreted by peripheral blood granulocytes, bone marrow, spleen, intestine, and lung. RELM-γ functions to promote and regulate promyelocytic differentiation, in addition to regulating nutrient-associated insulin sensitivity in the intestinal tract. Rodents secrete all four RELM family members, whereas Resistin and RELM-β are the only RELM family members found in humans.		
<b>UniProt ID:</b>	Q8K426		
<b>Gene ID:</b>	245195		
<b>Source:</b>	<i>E. coli</i> <b>Made without animal-derived components in an animal-free facility.</b>		
<b>Molecular Weight:</b>	9.4/18.9 kDa (89/178 aa) dimer		
<b>Formulation:</b>	Lyophilized from a sterile filtered aqueous solution containing 0.1% Trifluoroacetic Acid (TFA)		
<b>Purity:</b>	≥ 95% by reducing and non-reducing SDS-PAGE analysis		
<b>Endotoxin Level:</b>	≤ 0.1 EUs/µg by Kinetic LAL		
<b>Biological Activity:</b>	No data available at this time.		
<b>Amino Acid Sequence:</b>	MEGTLESIVE KVKELLANR DDCPSTVTKT FSCTSITASG RLASCPSGMT VTGCACGYGC GSWDIRDGNT CHCQCSTMDW ATARCCQLA		
<b>Reconstitution:</b>	<b>Centrifuge vial prior to opening.</b> Add sterile distilled water to a concentration of 0.1 mg/mL and gently pipette the solution up and down the sides of the vial. <b>DO NOT VORTEX.</b> Allow several minutes for complete reconstitution.		
<b>Storage &amp; Stability:</b>	Store as supplied at -20°C to -80°C for up to 1 year. Upon reconstitution, prepare working aliquots and store at -20°C to -80°C. It is recommended that a carrier protein such as 0.1% HSA or BSA is added for long term storage. <b>Avoid repeated freeze-thaw cycles.</b>		





**Mouse RELM gamma Gel**

Figure: 1 ug run under (-) non-reducing and (+) reducing conditions in a 4-20% Tris-Glycine gel, stained with Coomassie Blue. Mouse RELM gamma is predicted to be a dimer with a total MW of 18.9 kDa but the dimer runs larger (each monomer is predicted to be 9.4 kDa).

**NOT FOR HUMAN USE. FOR RESEARCH ONLY. NOT FOR DIAGNOSTIC OR THERAPEUTIC USE.**



**Cell Sciences®**  
65 Parker Street  
Unit 11  
Newburyport, MA 01950

Toll Free: 888-769-1246  
Phone: 978-572-1070  
Fax: 978-992-0298

E-mail: [info@cellsciences.com](mailto:info@cellsciences.com)  
Website: [www.cellsciences.com](http://www.cellsciences.com)