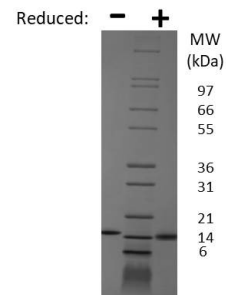
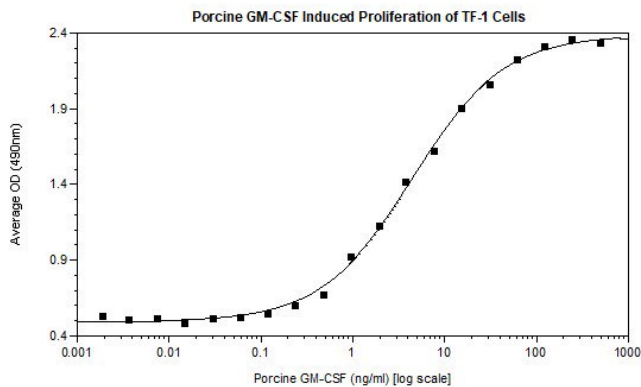


CSF2

Porcine GM-CSF, Animal Free

Catalog No.	CRG120A-AF CRG120B-AF CRG120C-AF	Quantity:	20 µg 100 µg 1 mg
Alternate Names:	Granulocyte-macrophage colony-stimulating factor, CSF-2, Pluripoietin-α, MGI-1GM		
Description:	Granulocyte-macrophage colony-stimulating factor (GM-CSF) is hematopoietic growth factor produced by endothelial cells, monocytes, fibroblasts, and T cells. GM-CSF stimulates the production of neutrophilic granulocytes, macrophages, and mixed granulocyte-macrophage colonies from bone marrow cells. GM-CSF promotes immune system development and regulates neutrophil function during infection.		
GeneID:	397208		
UniProt ID:	Q29118		
Source:	<i>E.coli</i> Manufactured without Animal-derived products, in an Animal Free facility.		
Molecular Weight:	Monomer, 14.5 kDa (with 128 amino acids)		
Formulation:	Lyophilized from a sterile (0.2 micron) filtered aqueous solution containing 10 mM sodium phosphate, pH 7.5		
Purity:	≥ 95%, by reducing and non-reducing SDS-PAGE		
Endotoxin Level:	≤ 1 EUs/µg, by kinetic LAL		
Biological Activity:	ED50 ≤ 10 ng/ml, determined by TF-1 cell proliferation.		
Specific Activity:	≥ 1.0 x 10 ⁵ units/mg		
Amino Acid Sequence:	MAPTRPPSPV TRPWQHVDAL KEALSLNNS NDTAAVMNET VDVVCEMFDP QEPTCVQTRL NLYKQGLRGS LTRLKSPLTL LAKHYEQHCP LTEETSCETQ SITFKSFKDS LNKFLFTIPF DCWGPPVKK		
Reconstitution:	Centrifuge vial before opening. Add sterile water to a concentration of 0.1 mg/ml. Suspend the product by gently pipetting the above recommended solution down the sides of the vial. DO NOT VORTEX. Allow several minutes for complete reconstitution.		
Storage & Stability:	Store as supplied at -20°C to -80°C for up to 1 year. Upon reconstitution, prepare working aliquots and store at -20°C to -80°C. It is recommended that a carrier protein such as 0.1% HSA or BSA is added for long term storage. Avoid repeated freeze-thaw cycles.		





Porcine GM-CSF Gel

Figure: 1 ug run under (-) non-reducing conditions and (+) reducing conditions in a 4-20% Tris-Glycine gel, stained with Coomassie Blue. Porcine GM-CSF is predicted to have a MW of 14.5 kDa.

NOT FOR HUMAN USE. FOR RESEARCH ONLY. NOT FOR DIAGNOSTIC OR THERAPEUTIC USE.



Cell Sciences®

65 Parker Street

Unit 11

Newburyport, MA 01950

Toll Free: 888-769-1246

Phone: 978-572-1070

Fax: 978-992-0298

E-mail: info@cellsciences.com

Website: www.cellsciences.com