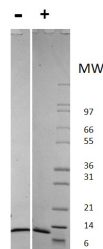


CCL2

Recombinant Human MCP-1 / CCL2

Catalog No.	CRH068A CRH068B CRH068C	Quantity:	20 µg 100 µg 1.0 mg
Alternate Names:	C-C motif chemokine 2, CCL2, Monocyte chemotactic protein 1, Monocyte secretory protein JE, Monocyte chemotactic and activating factor, MCAF, Small inducible cytokine A2		
Description:	Monocyte chemotactic protein 1 is produced by injured or infected tissues. MCP-1 signals through the CCR2 and CCR4 G protein-coupled receptors to recruit memory T cells, monocytes, and dendritic cells to sites of inflammation.		
UniProt ID:	P13500		
Source:	<i>E. coli</i>		
Molecular Weight:	8.7 kDa (76 aa) monomer		
Formulation:	Lyophilized from sterile filtered solution containing 0.1% Trifluoroacetic Acid (TFA).		
Purity:	≥ 95% by reducing and non-reducing SDS-PAGE		
Endotoxin Level:	≤1 EU/µg of protein by kinetic LAL analysis		
Biological Activity:	ED ₅₀ ≤ 100 ng/ml by dose-dependent THP-1 cell line chemotaxis		
Amino Acid Sequence:	QPDAINAPVT CCYNFTNRKI SVQRLASYRR ITSSKCPKEA VIFKTIVAKE ICADPKQKWV QDSMDHLDKQ TQTPKT		
Reconstitution:	Centrifuge vial prior to opening. Add sterile deionized water to a concentration of 0.1 mg/ml. DO NOT VORTEX. Allow several minutes for complete reconstitution.		
Storage & Stability:	Store as supplied at -20°C to -80°C for up to 1 year. Upon reconstitution, prepare working aliquots and store at -20°C to -80°C. It is recommended that a carrier protein such as 0.1% HSA or BSA is added for long term storage. Avoid repeated freeze-thaw cycles.		



Human MCP-1
Figure: 1 µg in each lane (-) non-reducing conditions and (+) reducing conditions in a 4-20% Tris-Glycine gel, stained with Coomassie Blue. Human MCP-1 has a predicted MW of 8.6 kDa.

NOT FOR HUMAN USE. FOR RESEARCH ONLY. NOT FOR DIAGNOSTIC OR THERAPEUTIC USE.



Cell Sciences®
65 Parker Street
Unit 11
Newburyport, MA 01950

Toll Free: 888-769-1246
Phone: 978-572-1070
Fax: 978-992-0298

E-mail: info@cellsciences.com
Website: www.cellsciences.com