

OSM

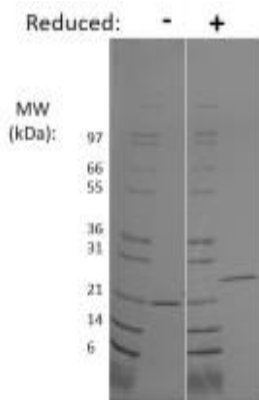
Recombinant Human Oncostatin M, Animal Free

Catalog No.	CRH323A-AF CRH323B-AF CRH323C-AF	Quantity:	2 µg 100 µg 1 mg
Alternate Names:	OSM		
Description:	Oncostatin M is a cytokine that is produced by macrophages, dendritic cells, and T lymphocytes during inflammatory events. The Type-I and Type-II Oncostatin M receptors are located on the cell surface of endothelial and tumor cells, contain the glycoprotein 130 (gp130) subunit, and activate the JAK/STAT signaling pathway. Oncostatin M functions to inhibit tumor cell proliferation, induce liver stem cell maturation, regulate cytokine production during hematopoiesis and inflammation, stimulate bone formation, and promote nervous system development.		
Gene ID:	5008		
Protein Accession No:	P13725		
Source:	<i>E. coli</i> Manufactured in an Animal-Free facility, without Animal-Derived materials.		
Molecular Weight:	Monomer, 23.8 kDa (210 aa)		
Formulation:	Lyophilized from sterile-filtered 10 mM sodium phosphate, pH 7.5		
Purity:	≥95% by reducing and non-reducing SDS-PAGE		
Endotoxin Level:	≤1 EU/µg by kinetic LAL analysis		
Biological Activity:	ED ₅₀ ≤ 4 ng/ml, determined by the ability to induce proliferation of TF-1 cells.		
Specific Activity:	≥2.5 x 10 ⁵ U/mg		
Amino Acid Sequence:	MAAIGSCSKE YRVLLGQLQK QTDLMQDTSR LLDPIYRIQG LDVPKLREHC RERPGAFPSE ETLRGLGRRG FLQTLNATLGCVLHRLADLE QRLPKAQDLE RSGLNIEDLE KLQMARPNI LGLRNNIYCMA QLLDNSDTAE PTKAGRGASQ PPTPTPASDA FQRKLEGCRFLHGYHRFMHS VGRVFSKWGE SPNRSRRHSP HQALRKGVR		
Reconstitution:	Centrifuge vial prior to opening. Add sterile distilled water to a concentration of 0.1 mg/mL and gently pipetting the solution up and down the sides of the vial. DO NOT VORTEX. Allow several minutes for reconstitution. A small amount of precipitate may be seen.		



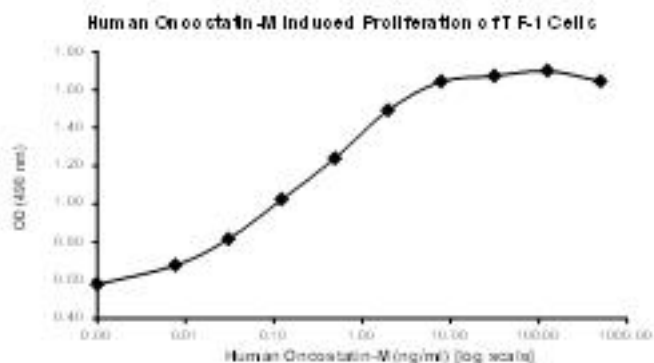
Storage & Stability:

Store as supplied at -20°C to -80°C for up to 1 year. Upon reconstitution, prepare working aliquots and store at -20°C to -80°C. It is recommended that a carrier protein such as 0.1% HSA or BSA is added for long term storage. **Avoid repeated freeze-thaw cycles.**



Human Oncostatin M Gel

Figure: 1 ug in each lane (-) non-reducing conditions and (+) reducing conditions in a 4-20% Tris-Glycine gel, stained with Coomassie Blue. Human Oncostatin M is predicted have a MW of 23.8 kDa.



NOT FOR HUMAN USE. FOR RESEARCH ONLY. NOT FOR DIAGNOSTIC OR THERAPEUTIC USE.



Cell Sciences®
65 Parker Street
Unit 11
Newburyport, MA 01950

Toll Free: 888-769-1246
Phone: 978-572-1070
Fax: 978-992-0298

E-mail: info@cellsciences.com
Website: www.cellsciences.com