

## PSPN

### Recombinant Human Persephin, Animal Free

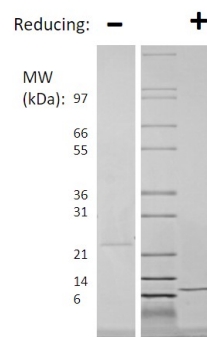
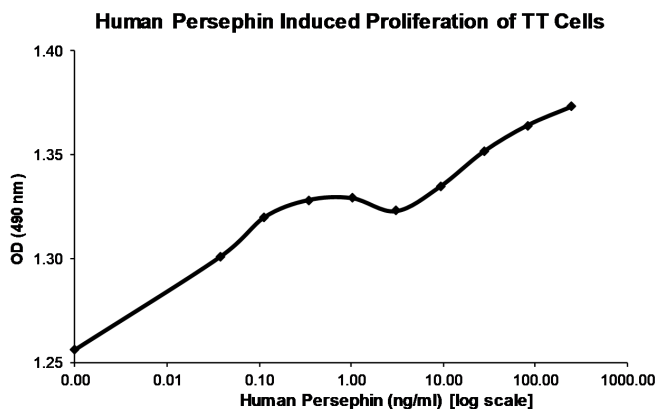
<b>Catalog No.</b>	CRH324A-AF CRH324B-AF CRH324C-AF	<b>Quantity:</b>	5 µg 100 µg 1 mg
<b>Alternate Names:</b>	PSP		
<b>Description:</b>	Persephin is a neurotrophic factor of the glial cell line-derived neurotrophic factor (GDNF) family. Persephin promotes survival and growth of dopaminergic and motor neurons, but not peripheral neurons. Persephin is a ligand for the RET receptor tyrosine kinase.		
<b>Gene ID:</b>	5623		
<b>UniProt ID:</b>	O60542		
<b>Source:</b>	<i>E. coli</i> <b>Manufactured without Animal-derived products, in an Animal Free facility.</b>		
<b>Molecular Weight:</b>	Dimer, 10.4/20.8 kDa (97/194 aa)		
<b>Formulation:</b>	Lyophilized from sterile-filtered 10 mM sodium phosphate, pH 7.5		
<b>Purity:</b>	≥95% by reducing and non-reducing SDS-PAGE		
<b>Endotoxin Level:</b>	≤ 0.1 EU/µg by kinetic LAL analysis		
<b>Biological Activity:</b>	ED <sub>50</sub> ≤ 20 ng/ml, determined by the dose-dependent proliferation of human thyroid carcinoma cells (TT cells).		
<b>Specific Activity:</b>	≥ 5.0 x 10 <sup>4</sup> U/mg		
<b>Amino Acid Sequence:</b>	MALSGPCQLW SLTLSVAELG LGYASEEKVI FRYCAGSCPR GARTQHGLAL ARLQGGGRAH GGPCCRPTRY TDVAFLDDRH RWQRLPQLSA AACGCGG		
<b>Reconstitution:</b>	<b>Centrifuge vial prior to opening.</b> Add sterile distilled water to a concentration of 0.1 mg/mL and gently pipetting the solution up and down the sides of the vial. <b>DO NOT VORTEX.</b> Allow several minutes for reconstitution. A small amount of precipitate may be seen.□		



## Storage & Stability:

Store as supplied at -20°C to -80°C for up to 1 year. Upon reconstitution, prepare working aliquots and store at -20°C to -80°C. It is recommended that a carrier protein such as 0.1% HSA or BSA is added for long term storage.

**Avoid repeated freeze-thaw cycles.**



**Human Persephin QC Gel**

Figure: 1 ug in each lane (-) non-reducing conditions and (+) reducing conditions in a 4-20% Tris-Glycine gel, stained with Coomassie Blue. Human Persephin is predicted to be a dimer with a total MW of 20.8 kDa (each monomer is 10.4 kDa).

**NOT FOR HUMAN USE. FOR RESEARCH ONLY. NOT FOR DIAGNOSTIC OR THERAPEUTIC USE.**



**Cell Sciences®**

65 Parker Street

Unit 11

Newburyport, MA 01950

Toll Free: 888-769-1246

Phone: 978-572-1070

Fax: 978-992-0298

E-mail: [info@cellsciences.com](mailto:info@cellsciences.com)

Website: [www.cellsciences.com](http://www.cellsciences.com)