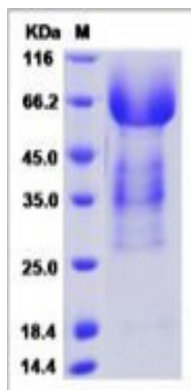


## SDC3

### Recombinant Human Syndecan-3 (His Tag, ECD)

<b>Catalog No.</b>	CRH670A-His CRH670B-His	<b>Quantity:</b>	50 µg 200 µg
<b>Alternate Names:</b>	Syndecan-3, SYND3, SDC3		
<b>Description:</b>	<p>Syndecans (SDC) are a four member family of type 1 transmembrane proteins consisting of two related sub-families based on sequence homology. SDC2 and 4 form one family and SDC1 and 3 form the other. All syndecans have a short highly conserved cytoplasmic domain, a single transmembrane domain, and a larger extracellular core protein. In comparison to the other family members relatively little is known about SDC3. SDC3 is highly expressed in neural cells and is associated with altered satiety responses. Recent studies suggest that SDC3 expression is not restricted to neuronal tissues and has important roles in inflammatory disorders such as rheumatoid arthritis, disease associated processes such as angiogenesis and in the facilitation of infection of dendritic cells by HIV.</p>		
<b>UniProt ID:</b>	O75056		
<b>Accession Number:</b>	ABM82826.1		
<b>Protein Construction:</b>	A DNA sequence encoding the human SDC3 (Met1-Lys311) was expressed with a polyhistidine tag at the C-terminus.		
<b>Source:</b>	HEK293 Cells		
<b>Formulation:</b>	<p>Lyophilized from sterile PBS, pH 7.4. Normally 5 % - 8 % trehalose, mannitol and 0.01% Tween80 are added as protectants before lyophilization.</p>		
<b>Molecular Weight:</b>	The recombinant human SDC3 consists 322 amino acids and predicts a molecular mass of 33.1 kDa.		
<b>Purity:</b>	> 85 % as determined by SDS-PAGE.		
<b>Endotoxin Level:</b>	< 1.0 EU per µg of the protein as determined by the LAL method		
<b>Biological Activity:</b>	Testing in progress		
<b>Predicted N-terminal:</b>	Met		
<b>Reconstitution:</b>	<p><b>Centrifuge vial prior to opening.</b> Add sterile distilled water to a concentration of 0.1 mg/mL and gently pipette the solution up and down the sides of the vial. <b>DO NOT VORTEX.</b> Allow several minutes for complete reconstitution.</p>		
<b>Storage &amp; Stability:</b>	<p>Stable for up to 1 year from date of receipt at -20°C to -80°C After reconstitution, store working aliquots at -20°C to -80°C. <b>Avoid repeated freeze-thaw cycles.</b></p>		

SDS-PAGE



NOT FOR HUMAN USE. FOR RESEARCH ONLY. NOT FOR DIAGNOSTIC OR THERAPEUTIC USE.



**Cell Sciences®**  
65 Parker Street  
Unit 11  
Newburyport, MA 01950

Toll Free: 888-769-1246  
Phone: 978-572-1070  
Fax: 978-992-0298

E-mail: [info@cellsciences.com](mailto:info@cellsciences.com)  
Website: [www.cellsciences.com](http://www.cellsciences.com)