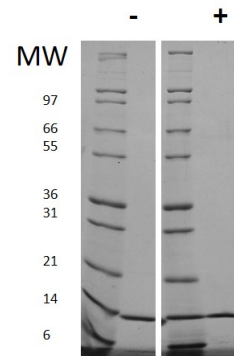
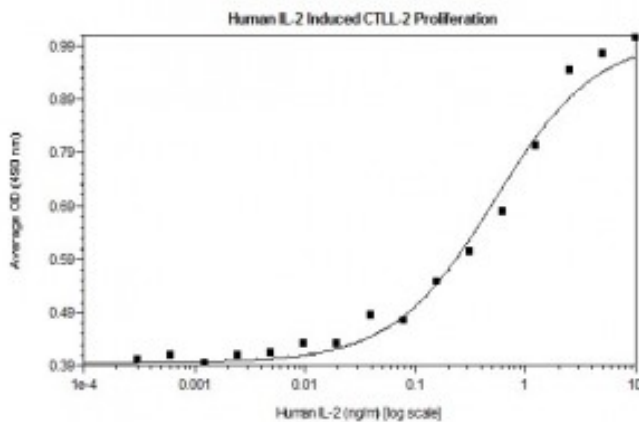


IL2

Recombinant Human Interleukin-2

Catalog No.	CRI100A CRI100B CRI100C	Quantity:	10 µg 50 µg 1.0 mg
Alternate Names:	IL-2, T-cell Growth Factor, TCGF, Aldesleukin, Lymphokine		
Description:	Interleukin-2 is a powerful immunoregulatory lymphokine produced by T-cells in response to antigenic or mitogenic stimulation. It is expressed by CD4+ and CD8+ T cells, γδ T cells, B cells, dendritic cells, and eosinophils. IL-2/IL-2R signaling is required for T-cell proliferation and other fundamental functions that are essential for the immune response. The receptor for IL-2 contains three subunits (55 kDa IL2Rα, 75 kDa IL2Rβ, 64 kDa common gamma chain γc/IL2Rγ) that are present on the cell surface in varying preformed complexes.		
Gene ID:	3558		
UniProt ID:	P60568		
Source:	<i>E. coli</i>		
Molecular Weight:	15.5 kDa (134 aa) monomer		
Formulation:	Lyophilized from sterile filtered solution containing 0.1% Trifluoroacetic Acid (TFA)		
Purity:	≥95% by reducing and non-reducing SDS-PAGE		
Endotoxin Level:	≤1 EU/µg by kinetic LAL		
Biological Activity:	ED ₅₀ ≤ 3 ng/ml, determined by the dose-dependent proliferation of mouse CTLL-2 cells. In addition, this product has been tested for primary human T cell proliferation, with a typical ED ₅₀ < 1 ng/ml.		
Specific Activity:	≥ 3.3 x 10 ⁵ U/mg by CTLL-2 assay The WHO International Standard (NIBSC code: 86/500) for rhIL-2 was tested in the in-house assay. To convert the in-house specific activity value to specific activity in International units (IU), multiply by 0.56		
Amino Acid Sequence:	MAPTSSSTKK TQLQLEHLLL DLQMILNGIN NYKNPKLTRM LTFKFYMPKK ATELKHLQCL EEELKPLEEV LNLAQSKNFH LRPRDLISNI NVIVLELKGS ETTFMCEYAD ETATIVEFLN RWITFCQSII STLT		
Reconstitution:	Centrifuge vial prior to opening. Add sterile 10 mM HCl to a concentration of 0.1 mg/mL. DO NOT VORTEX. Allow several minutes for complete reconstitution.		
Storage & Stability:	Store as supplied at -20°C to -80°C for up to 1 year. Upon reconstitution, prepare working aliquots and store at -20°C to -80°C. It is recommended that a carrier protein such as 0.1% HSA or BSA is added for long term storage. Avoid repeated freeze-thaw cycles.		



Human IL-2

Figure: 1 ug in each lane (-) non-reducing conditions and (+) reducing conditions in a 4-20% Tris-Glycine gel, stained with Coomassie Blue. Human IL-2 has a predicted MW of 15.5 kDa.

NOT FOR HUMAN USE. FOR RESEARCH ONLY. NOT FOR DIAGNOSTIC OR THERAPEUTIC USE.



Cell Sciences®
65 Parker Street
Unit 11
Newburyport, MA 01950

Toll Free: 888-769-1246
Phone: 978-572-1070
Fax: 978-992-0298

E-mail: info@cellsciences.com
Website: www.cellsciences.com